



Web site: <http://eispctools.anl.gov>

E-mail: eispctools@anl.gov

EISPC Energy Zones Mapping Tool Newsletter

March Webinar Demo: Corridor Analysis

Thursday, March 26, at 3pm ET/2 pm CT/1 pm MT

Use the following link to attend the webinar: http://anl.adobeconnect.com/eispc_tool_demo
(Audio via the webinar or by phone: 1-877-685-5350, participant code: 853223).

This one-hour demonstration will focus on analyzing planned or potential electrical transmission and pipeline corridors, including how obstacles can be identified and avoided early in the planning process.

Advisory Groups Update

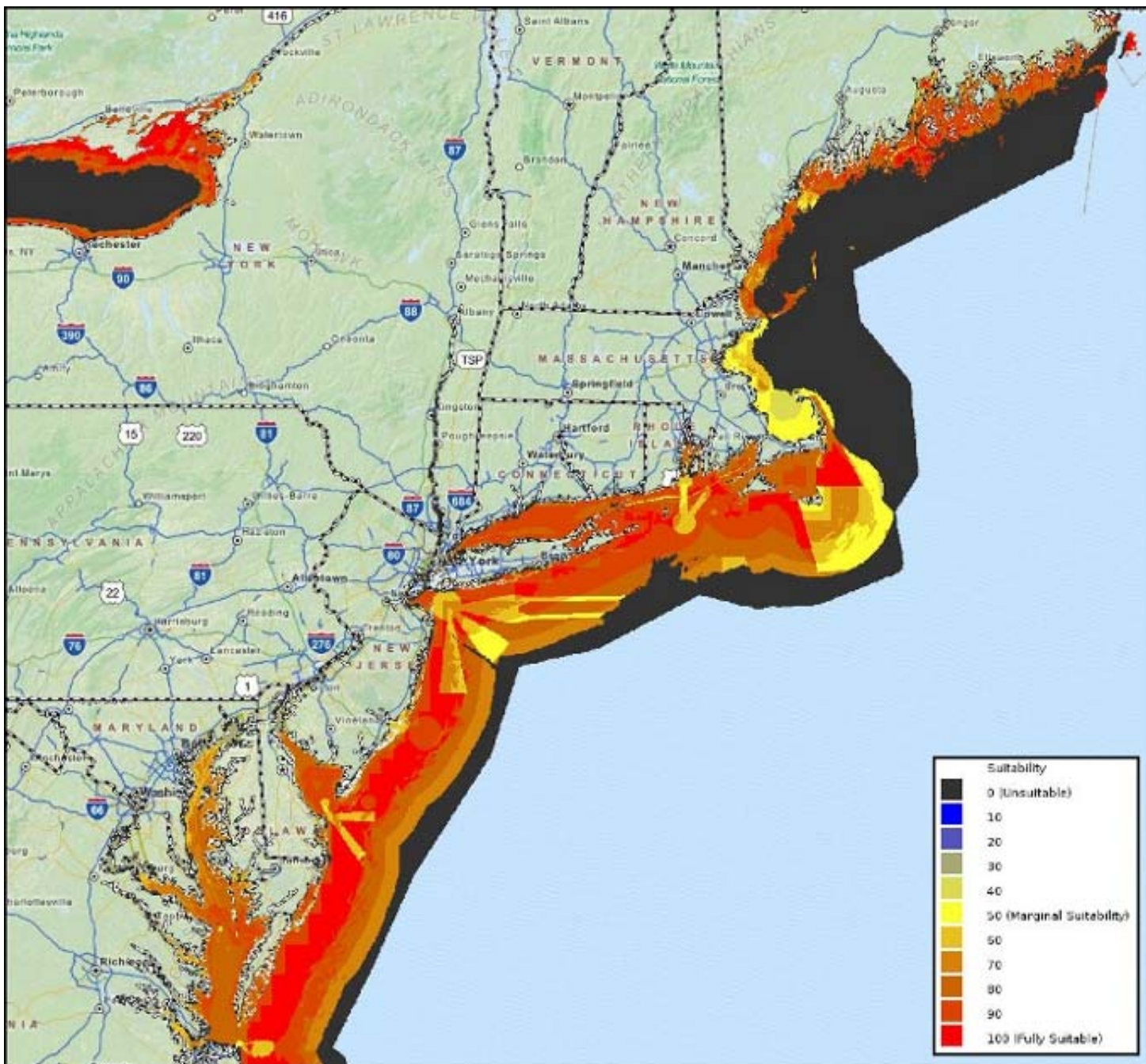
- An **Energy-Water Focus Team (EWFT)** web-based meeting was held on February 27 to review plans and provide feedback about the energy-water data and new reports being added to the Energy Zones Mapping Tool (EZMT). Discussion continued to focus mainly on the 2014 National Climate Assessment data applicability and data gaps.
- A **Corridor Focus Team (CFT)** web-based meeting was held on February 19 to help guide the process of enhancing the corridor screening and analysis tool. Discussion included the additional siting factors that could be added to the current corridor model and the best approach to model a new river crossing.

New members are welcome for either team. E-mail eispctools@anl.gov for more information.

In the News

Recent news helps illustrate how the EISPC Energy Zones Mapping Tool (EZMT) provides relevant data and analysis for current developments:

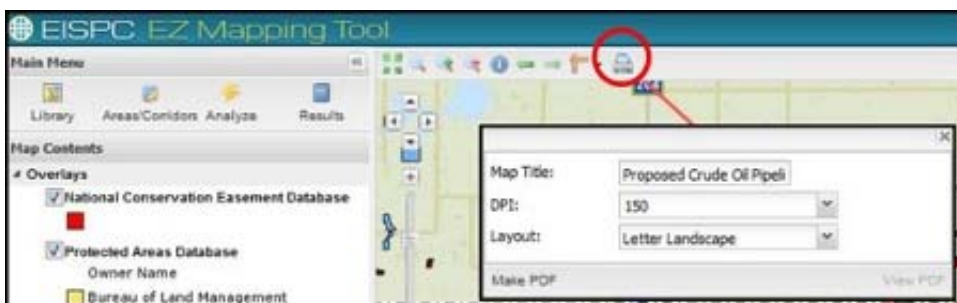
A [report](#) from Clean Energy Group and Navigant Consulting recommends a multi-state collaboration on offshore wind across the Northeast states to jumpstart the offshore wind industry. Models and data in the EISPC tool are designed to help determine locations where offshore wind turbines would be most suitable in U.S. portions of the Eastern Interconnection. The availability of data on a regional scale within the EISPC tool may help facilitate collaboration among these states.



Example Results of the 80m Offshore Wind Turbine Suitability Model.

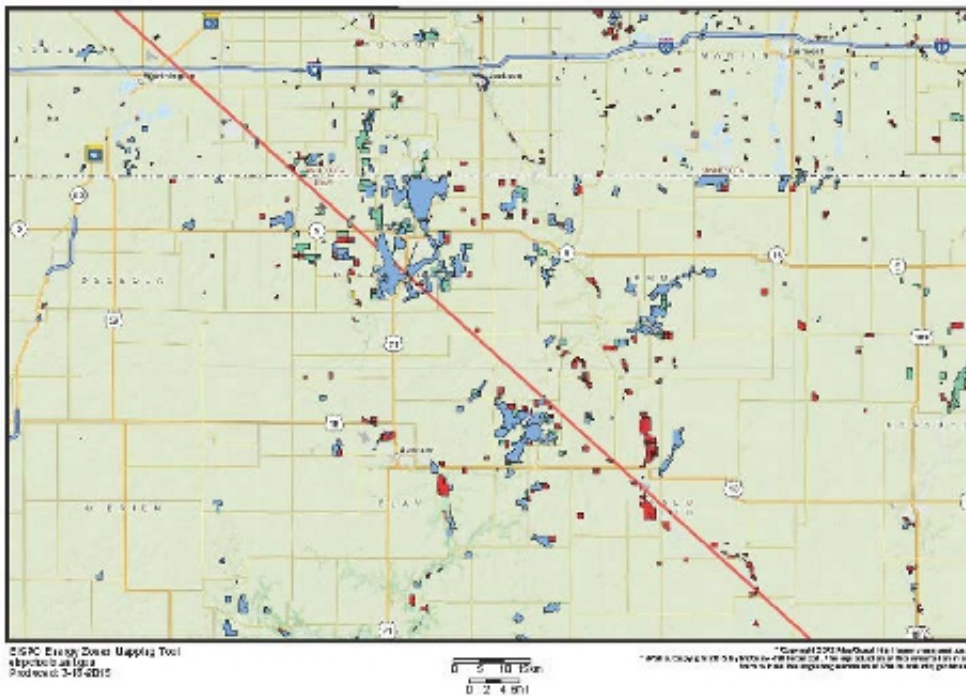
New EZ Mapping Tool Feature

A new print tool was added to the Mapping Tool interface.



Users can now create a PDF of areas of interest for use outside of the tool. Users can add a unique title to the figure and select from multiple resolutions and page layouts.

Proposed Crude Oil Pipeline with NCED and PADUS



Example PDF Created by Print Tool.

Recent EZ Mapping Tool Updates

The following mapping layers were updated:

- Transmission Line - Existing
- Transmission Line - Planned
- Substation
- Refined Product Pipeline - Existing
- Refined Product Pipeline - Proposed
- Power Plant - Existing
- Power Plant - Planned
- Power Plant - Not Operational/Unknown
- Natural Gas Pipeline - Existing
- Natural Gas Pipeline - Proposed
- Crude Oil Pipeline - Existing
- Crude Oil Pipeline - Proposed
- Potential Retrofitted Pulverized Coal Plant
- Existing Hydropower Dam (At least 50MW)

This message is being sent to registered users of the EISPC Energy Zones Mapping Tool (<http://eispctools.anl.gov>) who indicated in their profile they are interested in e-mail updates. If you are no longer interested you can log in and change this preference by using the Profile option under the My Account menu at the top right of the home page, or e-mail eispctools@anl.gov with a request to unsubscribe to the

updates.