

Site Wind Right: Accelerating Clean, Low-Impact Wind Energy in the Central United States

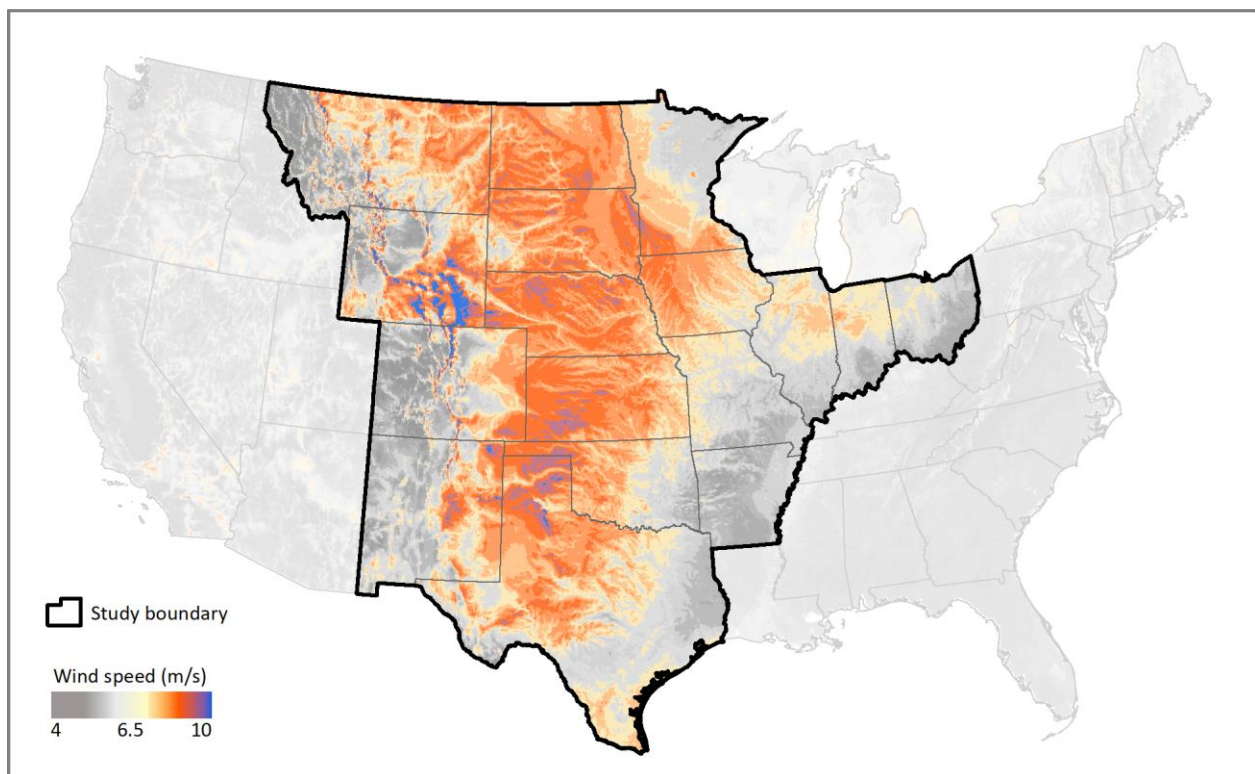


The Nature Conservancy.¹ July 2019. Site Wind Right: Accelerating Clean, Low-Impact Wind Energy in the Central United States. The Nature Conservancy's Great Plains Renewable Energy Initiative.
<http://www.nature.org/sitewindright>

Introduction

The Nature Conservancy supports the rapid expansion of renewable energy while protecting wildlife and natural habitats. This paper summarizes the data and assumptions included in The Conservancy's Site Wind Right assessment, as well as how we intend the results to be used. The Site Wind Right map was created to identify areas where wind development is unlikely to encounter significant wildlife-related conflict, project delays, and cost overruns. The map was designed to serve as an important source of information to inform screening early in the project siting process. It can be used to support application of the U.S. Fish and Wildlife Service Land-Based Wind Energy Guidelines, specifically Tier 1 and Tier 2 evaluations. By combining the Site Wind Right map with other land suitability factors, we demonstrate that over 1,000 GW of wind energy may be developed in the central U.S. exclusively in areas of low conservation impact. The results of this analysis indicate that we can accelerate a clean, low-impact energy future—one that advances energy, climate, and conservation goals.

Figure 1. The central U.S. Wind Belt (resource data modified from AWS Truepower 2010)



¹ Contacts

Mike Fuhr, Oklahoma State Director | 10425 S. 82nd E Ave., Ste. 104, Tulsa, OK 74133 | Tel. 918.585.1117 | mfuhr@tnc.org
Jessica Wilkinson, Senior Policy Advisor | 4245 N. Fairfax Dr., Arlington, VA 22203 | Tel. 732.672.5218 | jwilkinson@tnc.org
Nathan Cummins, GPRE Strategy Director | 1101 W. River Pkwy., Ste. 200, Minneapolis, MN 55415 | Tel. 314.956.6721 | ncummins@tnc.org

Background

Energy development is the largest driver of land use change in North America, and poorly sited renewable energy projects can have significant impacts on wildlife and high-priority habitats (Trainor et al. 2016). In addition, siting in areas that would significantly impact wildlife and habitat can lead to conflict and slow the transition to a low-carbon energy future. These delays and increased costs can be minimized by evaluating siting considerations early in the project development process (Tegen et al. 2016). Siting wind in areas that are low-impact for wildlife can ensure that we meet *both* our renewable energy and habitat conservation goals.

The Nature Conservancy created the Site Wind Right map (Figure 2) to identify areas where wind development is unlikely to encounter significant wildlife-related conflict, project delays, and cost overruns. It builds upon previous studies by The Nature Conservancy ([Kiesecker et al. 2011](#); [Obermeyer et al. 2011](#); [Fargione et al. 2012](#)).

The study area includes a 17-state region of the central U.S. - the “Wind Belt” (Figure 1) - that encompasses nearly 80 percent of the country’s current and planned onshore wind capacity (AWEA 2019a). This region is also home to North America’s largest and most intact temperate grasslands, which are among the most altered and least protected habitats in the world (Hoekstra et al. 2005).

Existing Resources on Wind Siting and Wildlife

There are many sources of information that can be used to support low-impact wind development. Federal and state wildlife and natural resource agencies, science-based conservation organizations, and academic institutions have produced information that can and should support low-impact siting. Notably, the U.S. Fish and Wildlife Service developed the Land-Based Wind Energy Guidelines to provide “a structured, scientific process for addressing wildlife conservation concerns at all stages of land-based wind energy development” (USFWS 2012a). The Wind Energy Guidelines (WEGs) were developed over a four-year period by the Wind Turbine Guidelines Advisory Committee, a diverse group of stakeholders that included participation by The Nature Conservancy. The WEGs are very broad guidelines that outline the types of information to include at each stage of site evaluation and what organizations and agencies should be consulted. The WEGs do not identify low-impact areas.

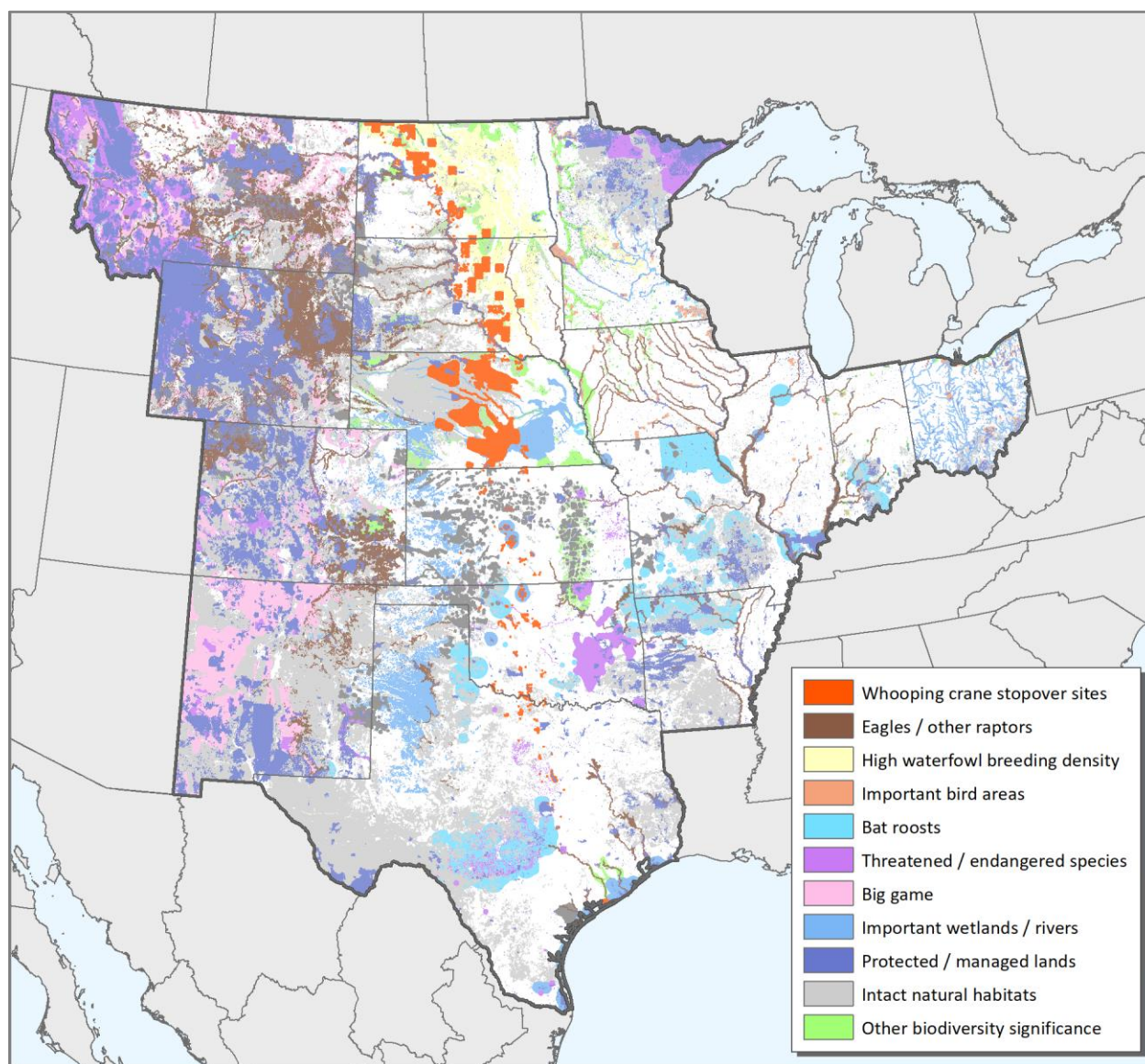
It is our understanding that most wind developers and operators take the WEGs very seriously (AWEA 2012). We applaud this commitment. We note, however, that successful implementation of the WEGs requires significant investment by developers. Early screening to identify areas of potential conflict could save costs associated with evaluating projects that ultimately may not move forward due to wildlife concerns. Further, the use of the WEGs is purely voluntary and good actors are not rewarded for adhering to good siting practices or abandoning problematic sites. There is no independent or regulatory process to verify that WEG analyses were rigorous, used the best available science, or identified risks to wildlife that can be adequately mitigated. Further, there is no independent confirmation that developers demonstrated a commitment to abandoning high risk projects. Developers also are not required to share results, making it difficult to ascertain the specific information used, what parties are consulted, the rigor of the overall analysis, what concerns were identified, and whether impacts to sensitive species can be adequately mitigated. This means that outside parties, including power purchasers, often struggle to understand the nature and extent of identified issues and whether conclusions are based on the best available science. Finally, WEG analyses are typically carried out after site-level investments have occurred, creating a disincentive to abandon even those projects that pose significant risk to habitat and species.

The Nature Conservancy believes that the WEGs can drive wind facilities to low-impact sites when the framework is used early in the project development process, when rigorously applied, and when developers commit to abandoning projects that are deemed “significant” and cannot be mitigated (USFWS 2012a). We commend wind developers for taking them seriously and intend for the Site Wind Right map to work in conjunction with the WEGs to support low-impact siting.

How to Use the Site Wind Right Map

The Nature Conservancy's Site Wind Right map (Figure 2) was designed to serve as an important source of information to support screening early in the project siting process. It can be used to inform application of the WEGs, specifically Tier 1 and Tier 2 evaluations. The map is not a "go/no-go map." Areas in white - those that have relatively low conservation value - are not "go areas" just as areas that are shaded are not "no-go areas." The map can be used as one source of information to inform Tier 1 and Tier 2 analyses, but it should not be the only source of information used. It was not intended to serve as a substitute for the WEGs, but rather used in conjunction with other appropriate information on habitat and species. The map does not replace the need to consider the data and information outlined in the WEGs, consult with state and federal wildlife agencies, or conduct detailed site-level analyses of impacts. In addition, there are other social and cultural factors that may make utility-scale renewable development inappropriate in some sites. If, however, proposed wind projects are located in an areas of high conservation value on the Site Wind Right map, we suggest a much more cautious and transparent approach to the WEGs. Specifically, we recommend that projects proposed in these areas make the following information available to state and federal wildlife agencies and, to the maximum extent possible, to the public: 1) results of the Tier 1

Figure 2. Site Wind Right map



and Tier 2 evaluations, specifically whether projects are anticipated to have a low, moderate, or high probability of significant adverse impacts to wildlife and habitat; 2) how determinations were made about the significance of impacts; and 3) proposed measures for mitigating impacts to projects that will have a moderate or high probability of adverse impact to wildlife and habitat (USFWS 2012a).

Site Wind Right promotes a positive vision for renewable energy by demonstrating that ambitious wind development goals are achievable on sites with minimal risk of wildlife conflicts. Power purchasers acquiring wind-generated electricity from low-impact sites may meet renewable energy goals while avoiding sensitive species and habitats. Likewise, developers are less likely to encounter wildlife-related project delays and cost overruns in low-impact areas, thus resulting in more reliable and efficient deployment of renewable energy.

The Site Wind Right Map

The Site Wind Right map identifies sensitive natural habitats and distributions of wildlife species that may be adversely impacted by wind energy development (Figure 2). These include:

- Whooping crane stopover sites
- Eagle and other raptor nesting areas
- High waterfowl breeding density
- Important bird areas
- Bat roosts
- Threatened and endangered species
- Big game habitats
- Important wetlands and rivers
- Protected and managed lands
- Intact natural habitats
- Other areas of biodiversity significance

Sources and delineation methods for component elements are detailed in [Appendix A](#). An interactive map and GIS dataset are available to the public and may be accessed at <http://www.nature.org/sitewindright>.

Analysis and Results

To demonstrate the potential for low-impact wind development within the study area, we combined the wildlife and habitats reflected in the Site Wind Right map (Figure 2) with spatial information on engineering and land use constraints (Figure 3) identified in published assessments of renewable energy potential and consistent with historical patterns of wind development in the Great Plains. Data sources and delineation methods for modeled restrictions are detailed in [Appendix A](#). We recognize that additional factors may affect development potential in specific locations, including transmission capacity and the availability of willing landowners (Tegen et al. 2016; Oteri et al. 2018).

Input data were rasterized at a ground sample distance of 30 m. We generated a preliminary Boolean map of areas suitable for wind development by excluding lands with potential engineering and land use restrictions. To eliminate isolated areas too small to support commercial wind development, the results were smoothed using a 1 km radius moving window, and patches less than 20 km² in size were removed. The component engineering and land use restrictions layers were then subtracted from the remaining smoothed patches to eliminate false positive values and other spatial artifacts introduced by the moving window analysis. To delineate suitable wind development areas with low potential for wildlife conflicts, wildlife and habitat data layers (see "The Site Wind Right map") were subtracted from the preliminary Boolean suitability map, and the analysis repeated as above. For each state and for the analysis area as a whole, we quantified wind development potential on all suitable lands, as well as the subset of suitable lands identified as low-impact, based on a nameplate capacity density of 3 MW/km² (Denholm et al. 2009).

Within the study area, we found that nearly 90 million ha (222 million ac) of land may be suitable for development (based on wind speed and terrain, excluding previously developed sites, statutory setbacks, unsuitable land use, and small/isolated sites). If all these areas were developed for wind energy, they could support approximately 2,693 GW of electrical capacity. After removing sensitive wildlife habitats, approximately 37 million ha (91 million

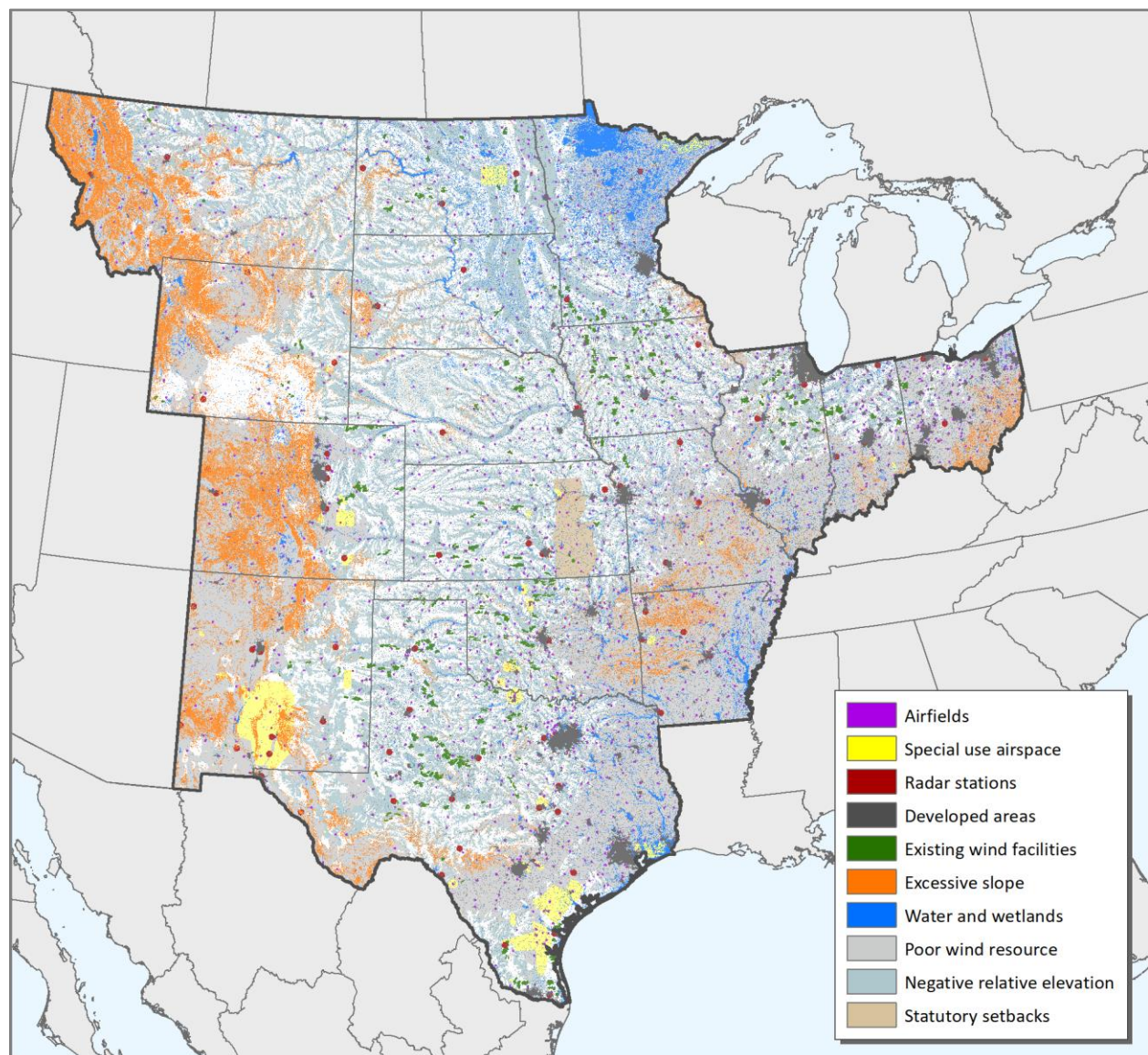
ac) remain as suitable for development (9% of the region) (Figure 4; Table 1). These low-impact areas are capable of yielding approximately 1,099 GW of electrical capacity. This is more than 10 times current U.S. wind capacity and equivalent to the total generating capacity from *all sources* (AWEA 2019b, USDOE 2018).

Discussion

Our analysis suggests that large areas of the central U.S. could be developed for wind energy without significant negative impacts to wildlife (Figure 4; Table 1). Because the availability of low-impact wind resources far exceeds development projections, our results should be applicable to any reasonable development scenario. Moreover, our estimates of development potential are likely conservative, as some areas we identified as having engineering and land use constraints may be viable for wind energy due to improvements in technology (USDOE 2017).

We note that our delineation of sensitive wildlife habitats is not exhaustive. Spatial data on species of concern are missing or incomplete in some areas. With all development projects, wildlife concerns should also be addressed through careful micro-siting. Operational mitigation may be required to reduce mortality, particularly for bats

Figure 3. Map of potential engineering and land use restrictions



(Arnett et al. 2013). These issues highlight the importance of continued research to advance the science on low-impact wind energy siting.

The results of this assessment provide a positive vision for accelerating a clean, low-impact energy future. We can meet our climate goals and support the conservation of wildlife and natural habitats. While we recognize there is not a one-size-fits-all solution to “good” siting, the Site Wind Right map can be a valuable source of information to identify project sites that support clean, low-impact wind.

Figure 4. Map of low-impact development areas

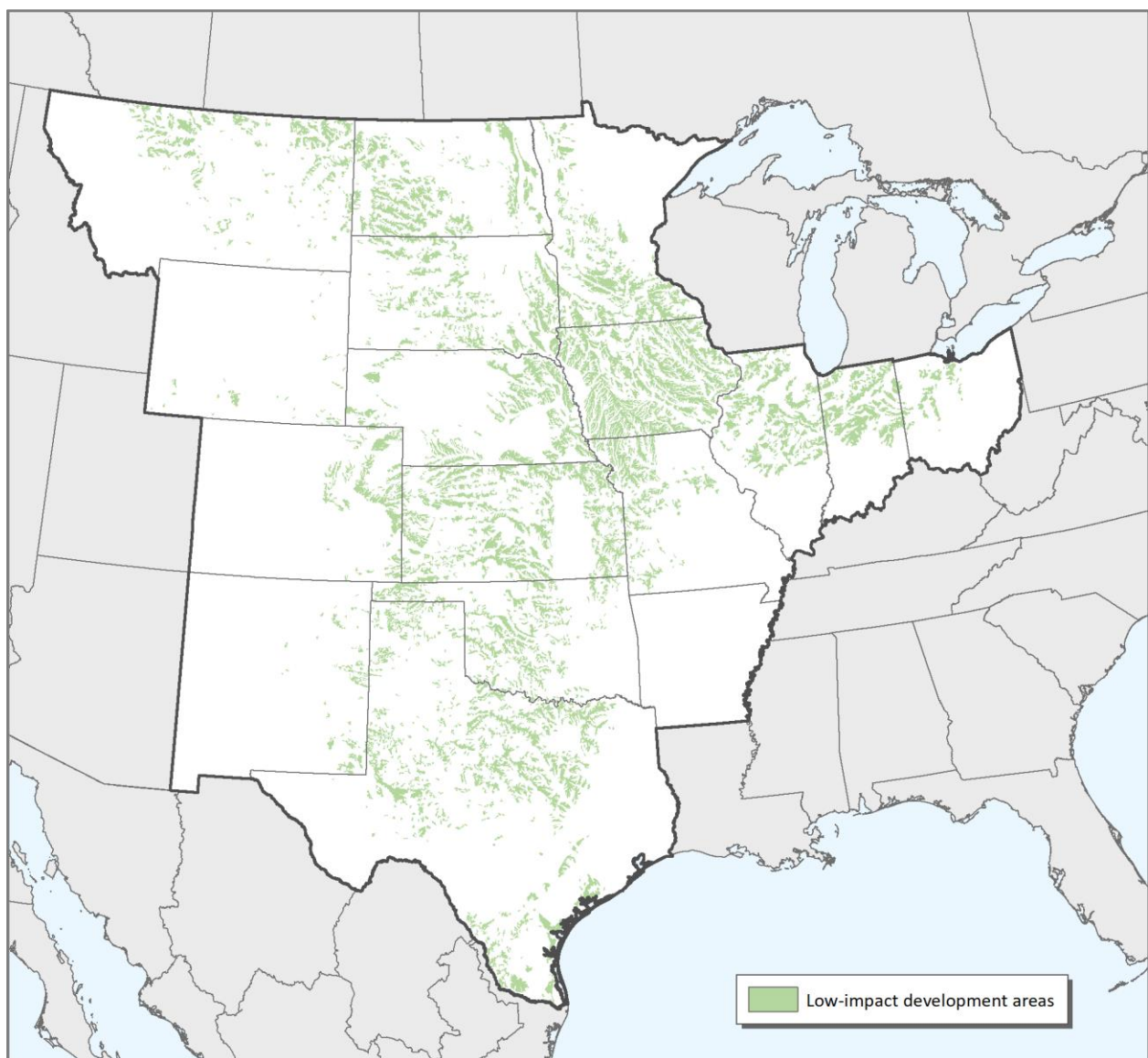


Table 1. Suitable land and low-impact development area statistics

State	Suitable land (ha) ¹	Percent of region ¹	Capacity (GW) ²	Low-impact suitable land (ha) ³	Percent of region ³	Capacity on low-impact suitable land (GW) ²
Texas	16,295,246	24%	489	5,949,204	9%	178
Iowa	5,095,929	35%	153	4,482,825	31%	134
Kansas	7,685,076	36%	231	4,456,486	21%	134
North Dakota	6,108,888	33%	183	2,717,512	15%	82
South Dakota	6,956,383	35%	209	2,622,635	13%	79
Nebraska	7,930,531	40%	238	2,349,375	12%	70
Minnesota	3,538,532	16%	106	2,334,814	11%	70
Montana	8,071,987	21%	242	2,221,824	6%	67
Oklahoma	3,676,994	20%	110	2,039,974	11%	61
Illinois	2,164,386	15%	65	2,021,177	14%	61
Indiana	1,681,702	18%	50	1,618,784	17%	49
Missouri	2,371,874	13%	71	1,461,704	8%	44
Colorado	3,992,396	15%	120	1,224,864	5%	37
New Mexico	5,145,711	16%	154	486,777	2%	15
Ohio	554,026	5%	17	447,384	4%	13
Wyoming	8,462,049	33%	254	201,897	1%	6
Arkansas	34,826	<1%	1	0	0%	0
<i>combined area</i>	89,766,534	23%	2,693	36,637,235	9%	1,099

¹ Based on engineering or land use constraints discussed in "Analysis and Results."

² Calculated based on a nameplate capacity density of 3 MW/km² (Denholm et al. 2009).

³ Land identified as low impact for wildlife and habitat (Site Wind Right map, Figure 2) without engineering or land use constraints (discussed in "Analysis and Results," Figure 3). Depicted spatially in Figure 4.

Appendix A – Component Element Descriptions

<u>Site Wind Right map</u>	page #
Whooping crane stopover sites.....	9
Eagles and other raptors	10
Prairie grouse	11
Bat roosts.....	13
High waterfowl breeding density	15
Important bird areas	16
Other threatened and endangered species (terrestrial)	17
Big game	18
Important wetlands and rivers	19
Protected and managed lands.....	20
Intact natural habitats	21
Other areas of biodiversity significance	22
 <u>Engineering and land use restrictions</u>	
Airfields.....	23
Special use airspace.....	24
Radar stations.....	25
Developed areas.....	26
Existing wind facilities	27
Excessive slope	28
Water and wetlands	29
Poor wind resource	30
Negative relative elevation.....	31
Statutory restrictions.....	32
 Literature cited	33

Whooping crane stopover sites

The federally endangered whooping crane (*Grus americana*) depends on wetlands in the central Great Plains during migration (USFWS 2011). Whooping cranes may be at risk of turbine collisions when ascending or descending from high altitude migration flights, or when travelling short distances between roost and foraging areas (USFWS 2009a). To address this concern, we delineated areas within 3.2 km of whooping crane stopover sites to be avoided by wind energy development. Stopover sites include locations with two or more confirmed whooping crane observations (USFWS 2010) since 1985, as well as modeled suitable habitat (Austin and Richert 2001; Belaire et al. 2014) within portions of the migratory flyway frequently used by whooping cranes (Pearse et al. 2015). We also include critical habitat polygons designated by the U.S. Fish and Wildlife Service (USFWS 2018), and whooping crane priority landscapes in Nebraska (NWWWG 2016).

Sources: data - USFWS (2010, 2016b, 2018); Pearse et al. (2015); NWWWG (2016); spatial analysis – TNC (2019).



Eagles and other raptors

Raptors may be injured or killed by collisions with wind turbines (Stewart et al. 2007; Smallwood and Thelander 2008; Watson et al. 2018), and rates of mortality at commercial wind facilities may be underestimated due to lack of rigorous monitoring and reporting (Pagel et al. 2013). To reduce risk of population-level impacts to golden eagles (*Aquila chrysaetos*) in the western Great Plains, we recommend that developers avoid siting wind turbines within areas of highest golden eagle densities (top 2 of 7 area-adjusted frequency quantiles) in ecoregions assessed by the Western Golden Eagle Team (WGET; Bedrosian et al. 2018). Following general habitat management guidelines established by USFWS (1989), we recommend that developers avoid placing turbines within 1.6 km of streams and lakes with known high densities of bald eagle (*Haliaeetus leucocephalus*) nests. In states with available data, we also mapped 3.2 km buffers of active golden eagle nests (CPW 2013), occupied peregrine falcon (*Falco peregrinus*) habitat (WGFD 2004; CPW 2015a), 1.6 km buffers of other active raptor nests (CPW 2013), raptor occurrences (MTNHP 2018a), and modeled prairie dog (*Cynomys* spp.) complexes (WGFD 2006; CPW 2009; MTNHP 2018b; TXNDD 2018a) as these areas may attract birds of prey.

Sources: WGFD (2004, 2006); CPW (2009, 2013, 2015a); Bedrosian et al. (2018); MTNHP (2018a, 2018b); TXNDD (2018a); unpublished TNC and USFWS data.



Prairie grouse

Grouse species in the central U.S. have experienced substantial population declines since the early 20th century (Vohdenhal and Haufler 2007) and may be further threatened by improperly sited energy development (Pruett et al. 2009; Van Pelt et al. 2013; Hovick et al. 2014; Winder et al. 2015; LeBeau et al. 2017). To prevent grouse displacement and potential impacts on vital rates, we recommend that developers avoid siting wind facilities in the following areas: Attwater's prairie-chicken (*Tympanuchus cupido attwateri*) known occurrence records (TXNDD 2018b) and the Refugio-Goliad Prairie Conservation Area in Texas (TNC 2009); Columbian sharp-tailed grouse (*T. phasianellus columbianus*) production areas and winter range in Colorado (CPW 2015b), and 5 km buffers of known leks in Wyoming (WGFD 2016); greater prairie-chicken (*T. cupido*) modeled optimal habitat (Obermeyer et al. 2011) in Kansas and Oklahoma, production areas in Colorado (CPW 2015c), and grassland conservation opportunity areas in Missouri (MDOC 2015); greater sage-grouse (*Centrocercus urophasianus*) rangewide biologically significant units (BLM 2018), state-designated core and connectivity areas in Wyoming (WGFD 2015) and Montana (MTFWP 2016), and 2 km buffers of known leks in Wyoming (WGFD 2017a); Gunnison sage-grouse (*C. minimus*) critical habitat (USFWS 2018), and production areas, brood areas, winter range, and severe winter range in Colorado (CPW 2011a); lesser prairie-chicken (*T. pallidicinctus*) rangewide conservation focal areas and 5 km buffers of known leks (SGPCHAT 2018); plains sharp-tailed grouse (*T. phasianellus jamesi*) production areas in Colorado (CPW 2015d), and 5 km buffers of known leks in Wyoming (WGFD 2017b).

Due to lack of spatially explicit data, sharp-tailed grouse and greater prairie-chicken habitats in Illinois, Iowa, Minnesota, Nebraska, North Dakota, and South Dakota were not included in this assessment.

Sources: data – TNC (2009); CPW (2011a, 2015b, 2015c, 2015d); MDOC (2015); WGFD (2015, 2016, 2017a, 2017b); MTFWP (2016); BLM (2018); SGPCHAT (2018); TXNDD (2018b); spatial analysis – TNC (2019).

map on following page

Prairie grouse (continued)



Bat roosts

Bat mortality has been documented at wind energy facilities across North America (Erickson 2002; USFWS 2003; Arnett and Baerwald 2013; AWWI 2018). Because bats concentrate in large numbers and have low reproductive rates, their viability is exceptionally vulnerable to population declines (Kunz and Fenton 2003). Therefore, caution is warranted when undertaking any activity that may adversely affect known bat populations.

While knowledge of bat and wind turbine interactions in the southern Great Plains is limited, evidence suggests that the Mexican free-tailed bat (*Tadarida brasiliensis*) may be particularly susceptible to fatal injury during encounters with turbine blades. This species accounts for a large percentage of documented wildlife mortality at wind facilities across the Southwestern U.S. (Kerlinger et al. 2006; Miller 2008; Piorkowski and O'Connell 2010; AWWI 2018), including in states with extensive wind development. Moreover, regional populations are comprised primarily of reproducing females (Caire et al. 1989; Schmidly 2004); as such, each early season fatality in the area may result in the deaths of two individuals (mother and young). Recent population estimates in Oklahoma are markedly lower than historical figures, possibly indicative of declines related to wind development or other factors (Caire et al. 2013). Due to the large foraging range of this species (Best and Geluso 2003) and concerns regarding population-level impacts, we recommend that developers avoid siting wind facilities within 32 km of Mexican free-tailed bat maternity roosts in New Mexico, Oklahoma, and Texas.

We followed USFWS's (2016a) recommendation to avoid wind development within 32 km of Indiana bat (*Myotis sodalis*) priority 1 hibernacula, 16 km of priority 2 hibernacula, and 8 km of other current and historical sites. We apply the same rationale and avoidance distances to gray bat (*Myotis grisescens*) hibernacula and other known cave bat roosts across our analysis area.

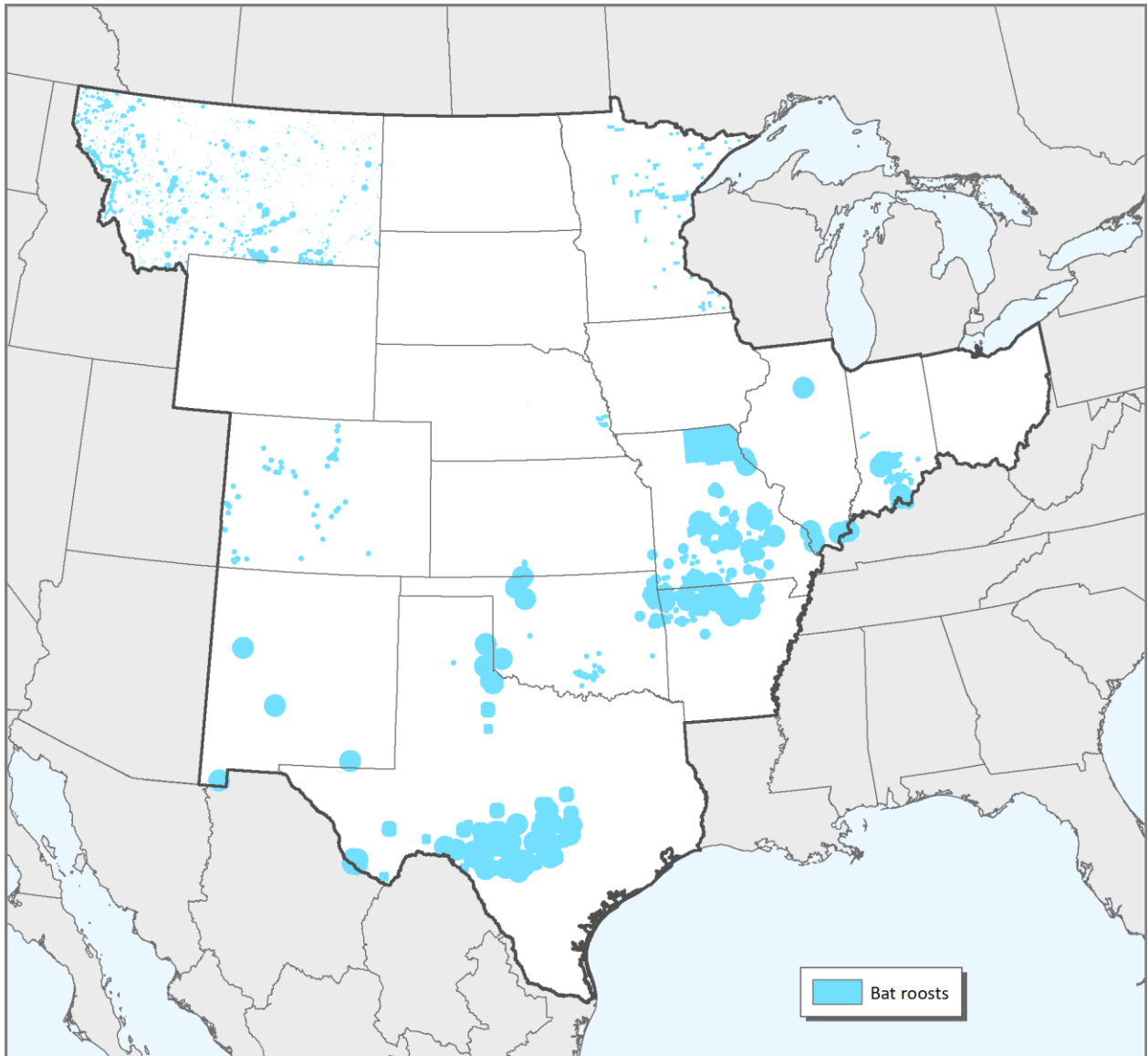
We also recommend avoidance of mapped bat roosts in Montana (MTNHP 2018c), mapped hibernacula in Nebraska (NWWWG 2016), townships with documented northern long-eared bat (*Myotis septentrionalis*) maternity roosts and/or hibernacula in Minnesota (MNDNR & USFWS 2018), a 12-county region of northeastern Missouri near Sodalís Nature Preserve (Cole 2018), and important forest habitats in Indiana (TNC and Audubon 2010).

We acknowledge that migratory tree bat mortality (Arnett et al. 2016; AWWI 2018) is a significant concern with wind development in the central U.S. A recent study suggests that the hoary bat (*Lasiurus cinereus*) population of North America could decline by as much as 90% in the next 50 years at current wind energy-associated fatality rates (Frick et al. 2017). At present, spatial data and knowledge of behavior are insufficient to effectively inform project siting decisions for these species. New methods to track seasonal bat movements are in development (Weller et al. 2016); we encourage the support of these studies to improve understanding of tree bat migration routes. In addition, we strongly encourage the use of proven operational mitigation strategies (Arnett et al. 2013) and new approaches such as smart curtailment (Hayes et al. 2019) to reduce impacts to bat populations.

Sources: KSU (2002); TNC (2003, 2019); TNC and Audubon (2010); Graening et al. (2011); INHDC (2014); KBS (2015a); NWWWG (2016); CNHP (2017a); MNDNR & USFWS (2018); MTNHP (2018c); TSS (2018).

map on following page

Bat roosts (continued)



High waterfowl breeding density

We recommend avoiding wind development in areas with high predicted waterfowl breeding pair density (104 pairs per km² or greater in North Dakota and South Dakota, 23.6 pairs per km² or greater in Minnesota) based on U.S. Fish and Wildlife Service Habitat and Population Evaluation Team data. This represents crucial habitat for many species of wetland-dependent birds in the Prairie Pothole region of North America (Reynolds et al. 2006; Niemuth et al. 2008.)

Source: Fargione et al. (2012)



Important bird areas

Important bird areas across the Great Lakes and Upper Midwest states may not be effectively captured by other spatial data layers used in this assessment. We recommend avoiding wind development within state bird conservation areas in Iowa (IADNR 2017) and Audubon important bird areas in Illinois, Indiana, Minnesota, and Ohio (NAS 2018).

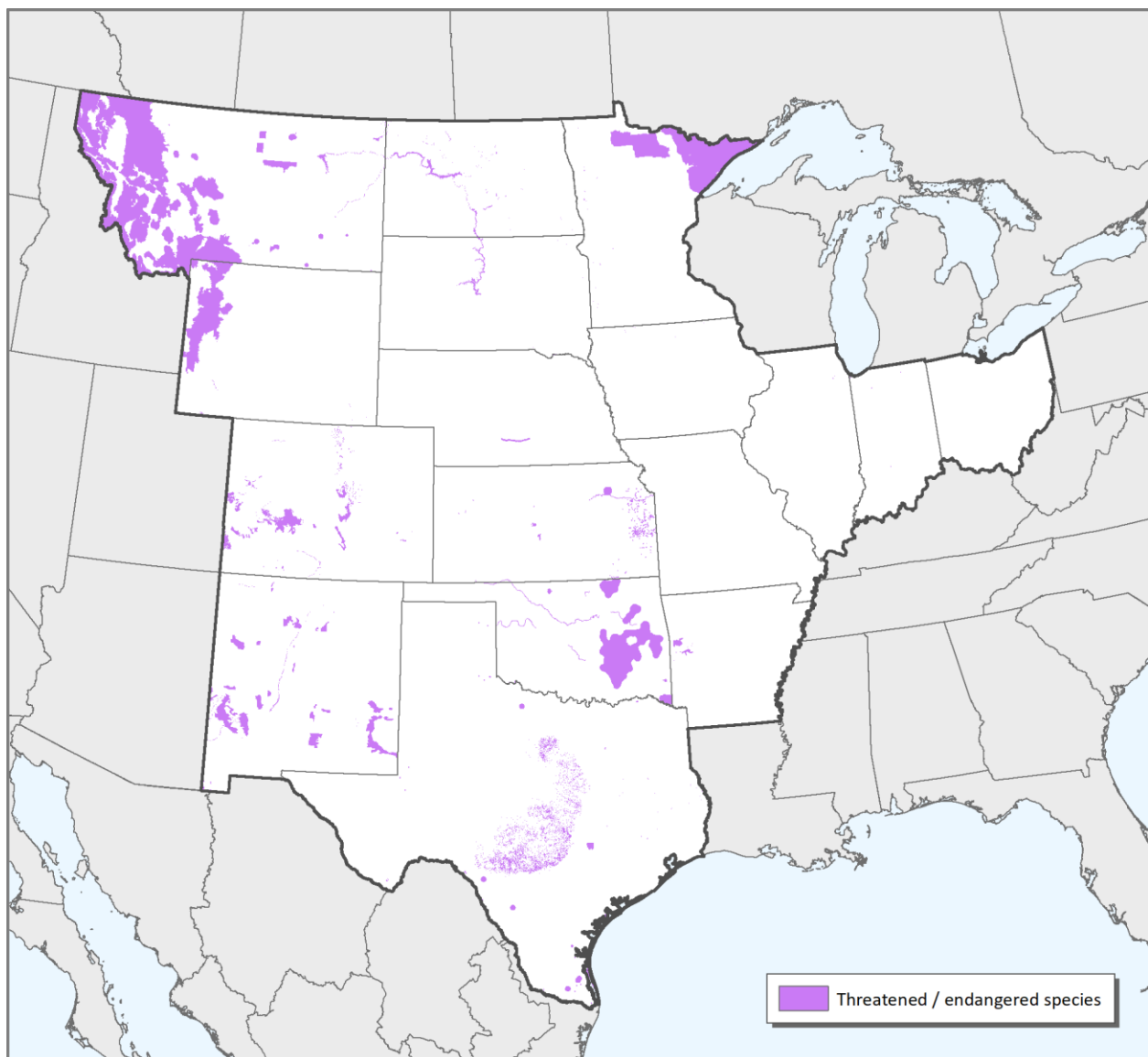
Sources: IADNR (2017); NAS (2018).



Other threatened and endangered species (terrestrial)

Energy and infrastructure development are among the most significant threats to imperiled species in the U.S. (Wilcove et al. 1998). Projects with a federal nexus (i.e. carried out, funded, licensed, or permitted by a federal agency) that have potential to impact federally threatened and endangered species require consultation with the U.S. Fish and Wildlife Service under Section 7 of the Endangered Species Act (USFWS 2009b). To prevent impacts to at-risk wildlife, we recommend avoiding wind development within terrestrial threatened and endangered species habitats. Mapped sites include critical habitat delineated by state and federal agencies, current/recent species distributions, modeled priority habitats, and occurrence records.

Sources: Masters et al. (1989); USFWS (1990); Diamond (2007); Laurencio and Fitzgerald (2010); CPW (2011a, 2011b, 2015e, 2015f), USFWS (2014a); KBS (2015b); KDWPT (2015); ODWC (2015); MTNHP (2018d); TXNDD (2018c); USFWS (2018); TNC (2019).



Big game

Roads and other anthropogenic features associated with energy development may alter the movements of big game animals and increase rates of mortality, particularly along migration routes and in crucial winter ranges of the western U.S. (Sawyer et al. 2006, 2009; WGFD 2011; Vore 2012; Taylor 2016). Due to the potential for loss and fragmentation of vital winter habitats, we recommend that developers avoid siting wind facilities within these areas.

Sources: MTFWP (2010); WGFD (2011); CPW (2015g); WECC (2018).



Important wetlands and rivers

Wind energy development near wetland complexes and riparian corridors may cause adverse impacts to migratory birds and other wildlife (Ewert et al. 2011; Obermeyer et al. 2011; Grodsky et al. 2013; PLJV 2017). Significant wetland features identified by TNC and partners include playa clusters and large isolated playa lakes (PLJV 2015); 1.6 km buffers of important rivers in North Dakota and South Dakota (Fargione et al. 2012), Nebraska (NWWWG 2016), Minnesota (MNDNR 2018a), and Ohio (Ewert et al. 2011); 16 km buffers of Western Hemisphere Shorebird Reserve Network (WHSRN 2019) wetland sites in Illinois, Kansas, Missouri, Oklahoma, and Texas plus the Aransas and Washita National Wildlife Refuges (following Obermeyer et al. 2011); and wetlands of special significance (MTNHP 2016) and trumpeter swan (*Cygnus buccinator*) occurrence records (MTNHP 2018e) in Montana.

Sources: Ewert et al. (2011); Fargione et al. (2012); PLJV 2015; ABC (2015); MTNHP (2018e); NWWWG (2016); MNDNR (2018a); TNC (2019); WHSRN (2019).

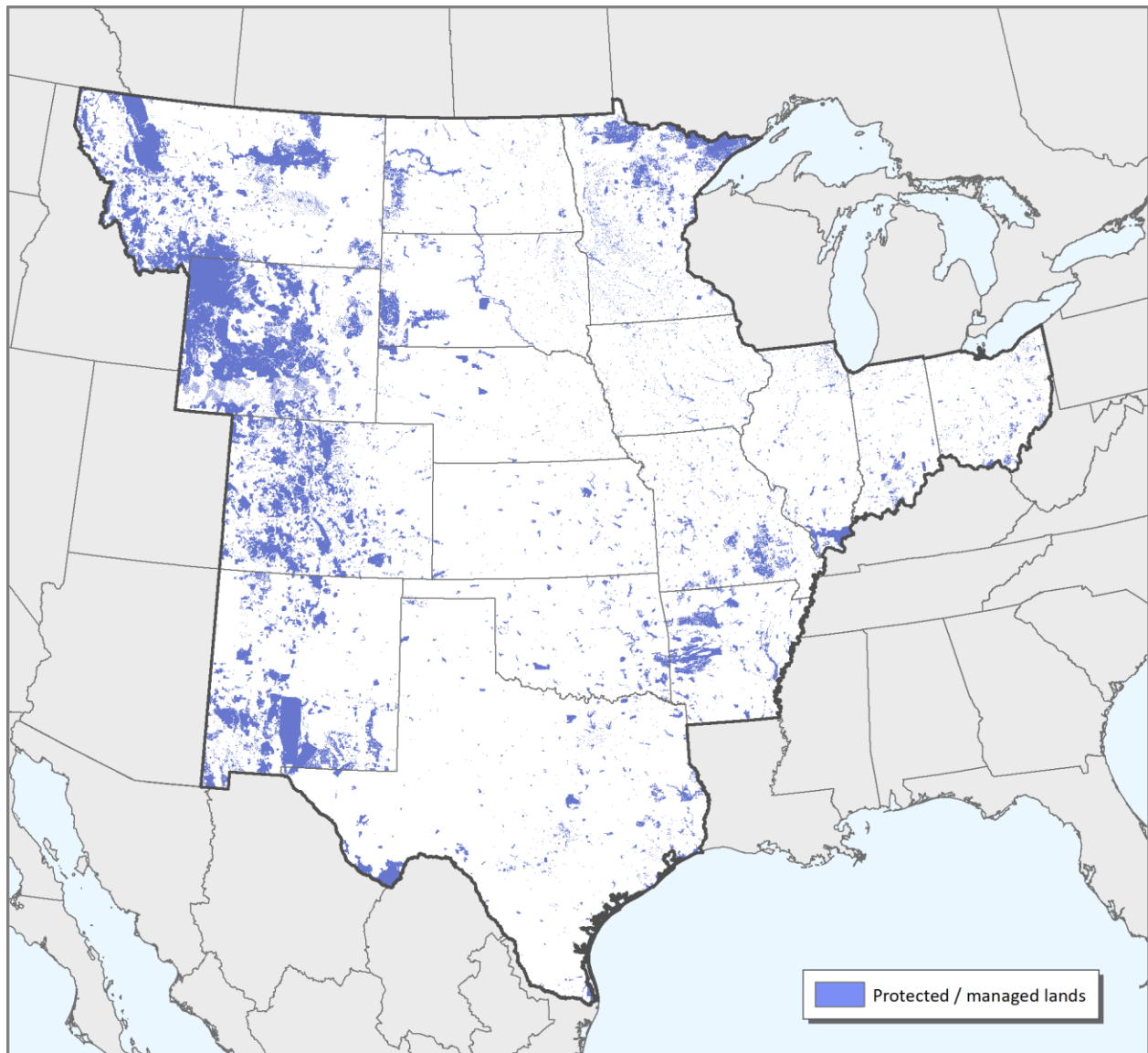


Protected and managed lands

Areas managed for long-term conservation of natural features include state parks and wildlife management areas; national monuments, parks, and wildlife refuges; military installations; other state and federal lands with development restrictions; private protected lands (including TNC preserves); and conservation easements.

Due to the relative scarcity and high conservation value of federal lands in the eastern portion the study area, all U.S. Forest Service properties outside of Colorado, Montana, New Mexico, and Wyoming were mapped regardless of planning designation status.

Sources: ANL (2016); USGS (2016); TNC (2019).



Agricultural conversion and other land use changes across the central U.S. have resulted in a significant reduction in the spatial extent of prairie ecosystems and the loss of many associated species. Remaining intact habitats provide the basis for long-term viability of many species of conservation concern.

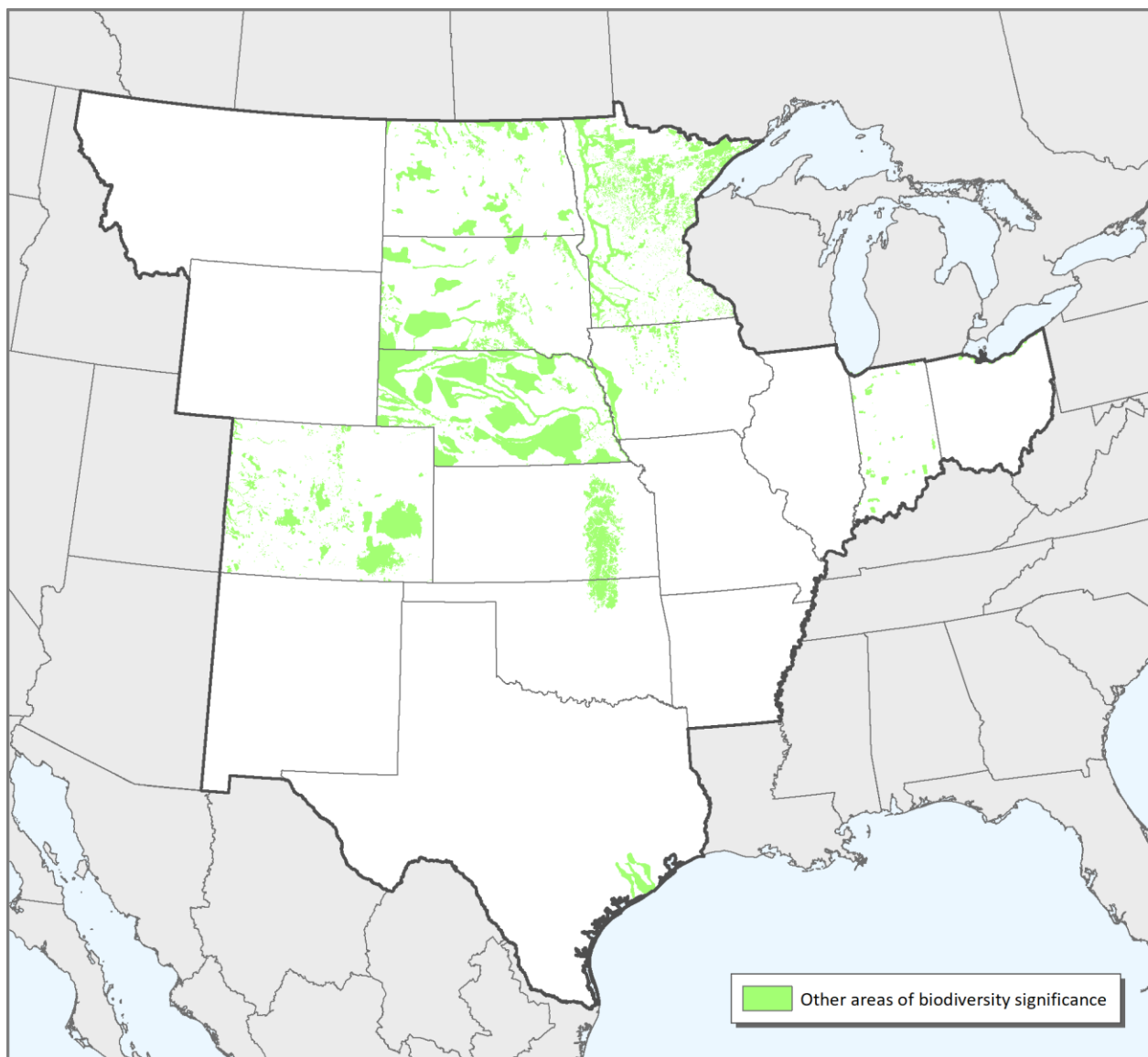
Sources: data - Ostlie (2003); Theobald (2013); AOGC (2014); TCF (2014); FracTracker Alliance (2016); COGCC (2018); KGS (2018); MGS (2018); MTDNRC (2018); NOGCC (2018); NMEMNRD (2018); NDDMR (2018); SDDENR (2018); TXRRC (2018); WYGCC (2018); TNC (2019); spatial analysis – TNC (2019).



Other areas of biodiversity significance

Sites identified in previous conservation assessments where wind development may present a threat to wildlife include the Flint Hills landscape of Oklahoma and Kansas (TNC 2000, 2007; WHSRN 2019); potential conservation areas with high, very high, or outstanding biodiversity significance in Colorado (CNHP 2017b); wind sensitive areas in Indiana (TNC and Audubon 2010); Prairie Pothole Joint Venture priority areas, and the Loess Hills ecoregion in Iowa (IADNR 2018); areas of moderate, high, or outstanding biodiversity significance (MNDNR 2015), and prairie conservation core areas, corridors, matrix habitat, and strategic habitat complexes in Minnesota (MNPPWG 2017); biologically unique landscapes, and medium and high sensitivity natural communities in Nebraska (NWWWG 2016); The Nature Conservancy's conservation priority areas in North Dakota and South Dakota (Fargione et al. 2012); areas within 8 km of the Lake Erie shoreline in Ohio (Ewert et al. 2011); and the Columbia Bottomlands Conservation Area in Texas (TNC 2002; USFWS 2012b).

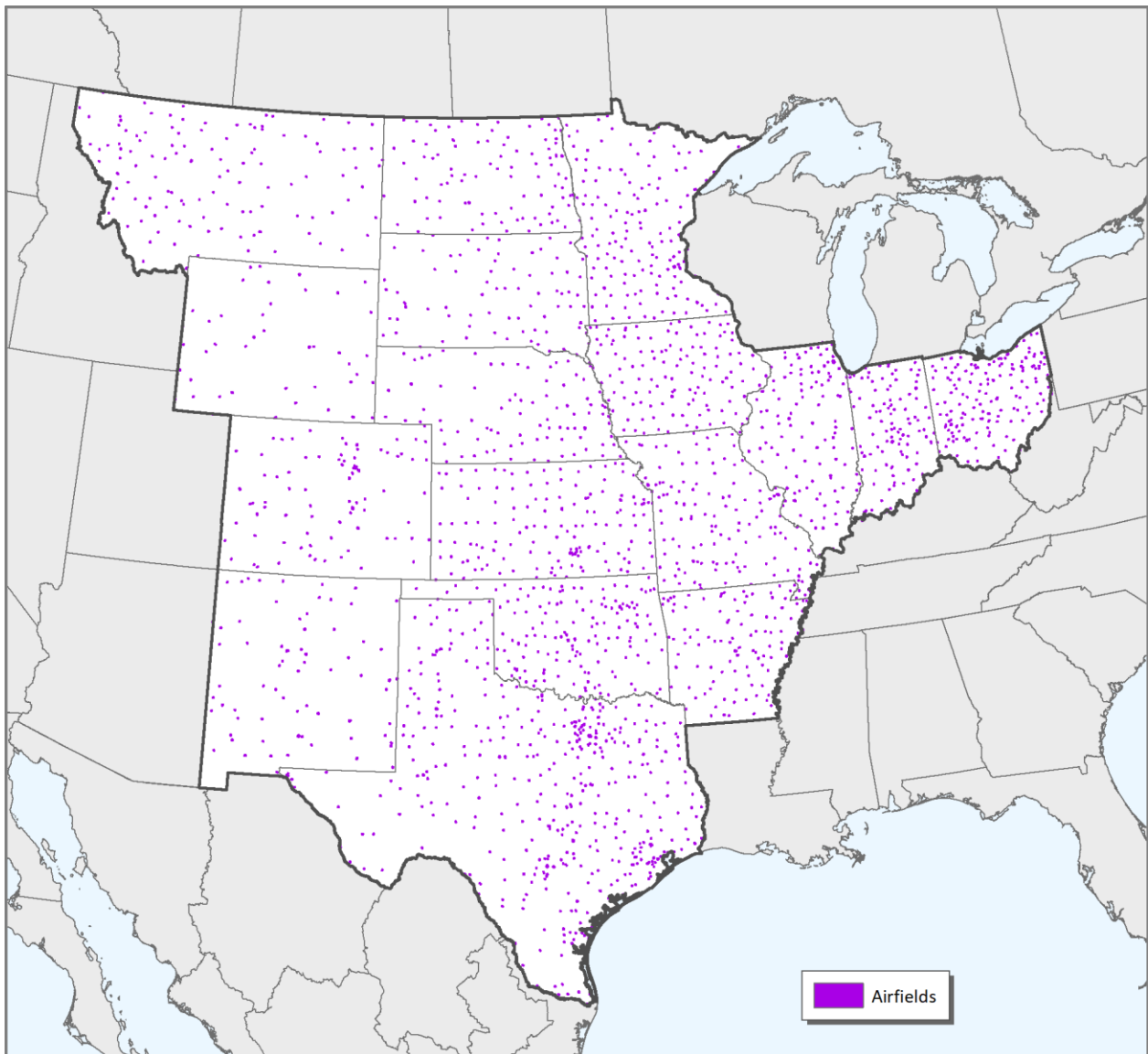
Sources: TNC (2000, 2002, 2007); TNC and Audubon (2010); Ewert et al. (2011); Fargione et al. (2012); USFWS (2012b); MNDNR (2015); NWWWG (2016); CNHP (2017b); MNPPWG (2017); IADNR (2018); WHSRN (2019).



Airfields

Commercial wind turbines require undisturbed airspace for operation and may present hazards to air travel. Areas within 3 km of public use and military airfield runways are considered unsuitable for wind development (USDOE 2008).

Source: USDOT (2017).

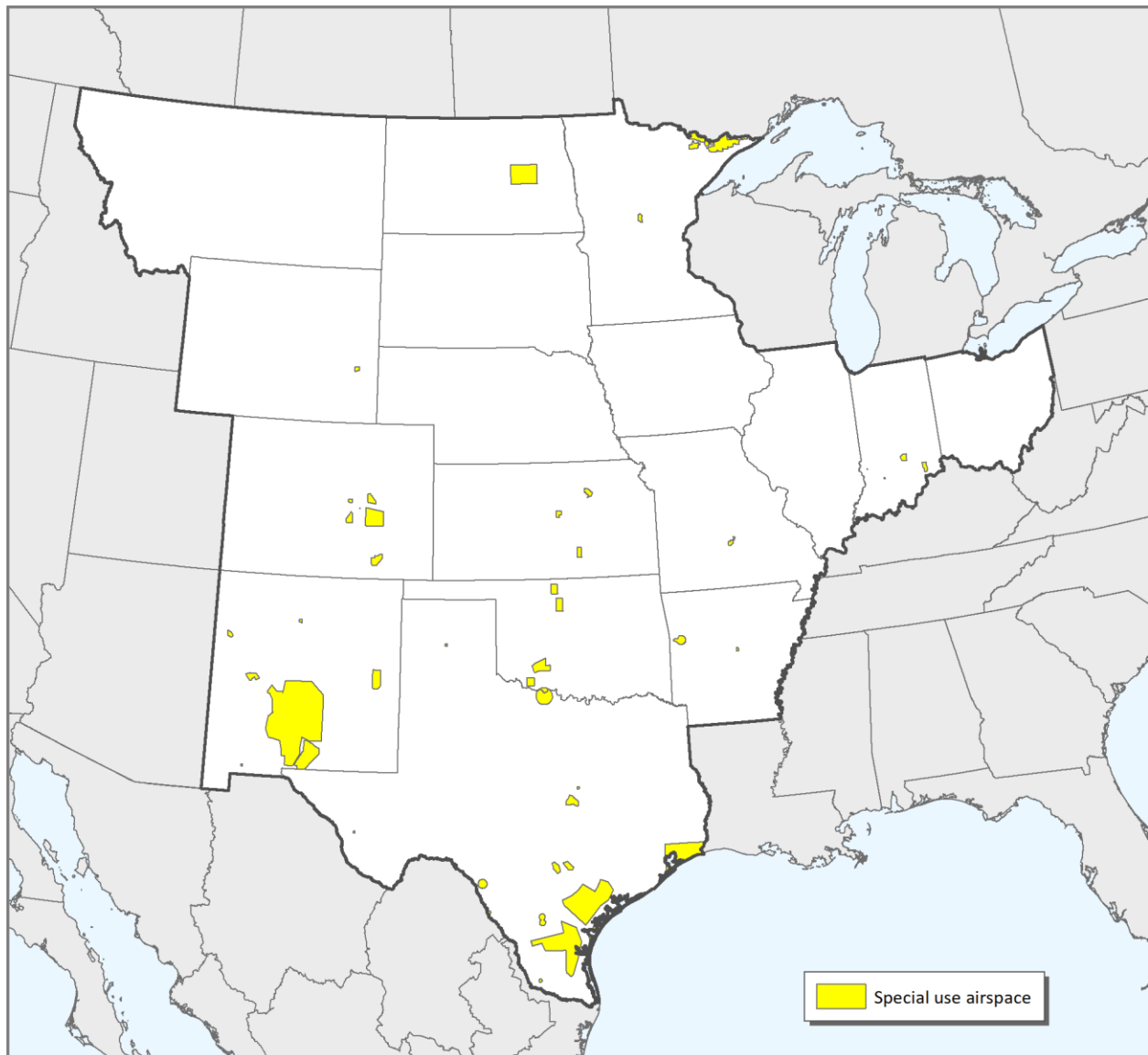


Special use airspace

Special use airspace areas managed by the Federal Aviation Administration contain unusual aerial activity, generally of a military nature. These include 'alert' areas which experience high volumes of training flights, 'restricted' areas near artillery firing ranges, and 'prohibited' areas with significant national security concerns (FAA 2010). Placement of wind turbines within these areas may create hazardous flight conditions and compromise military readiness (NRDC and USDOD 2013).

We consider alert, restricted, and prohibited airspace unsuitable for wind energy development. Outside of these areas, consultation with the U.S. Department of Defense may be required prior to constructing wind turbines within defined military operating areas, near low-level flight paths, and in areas that penetrate defense radar lines of sight.

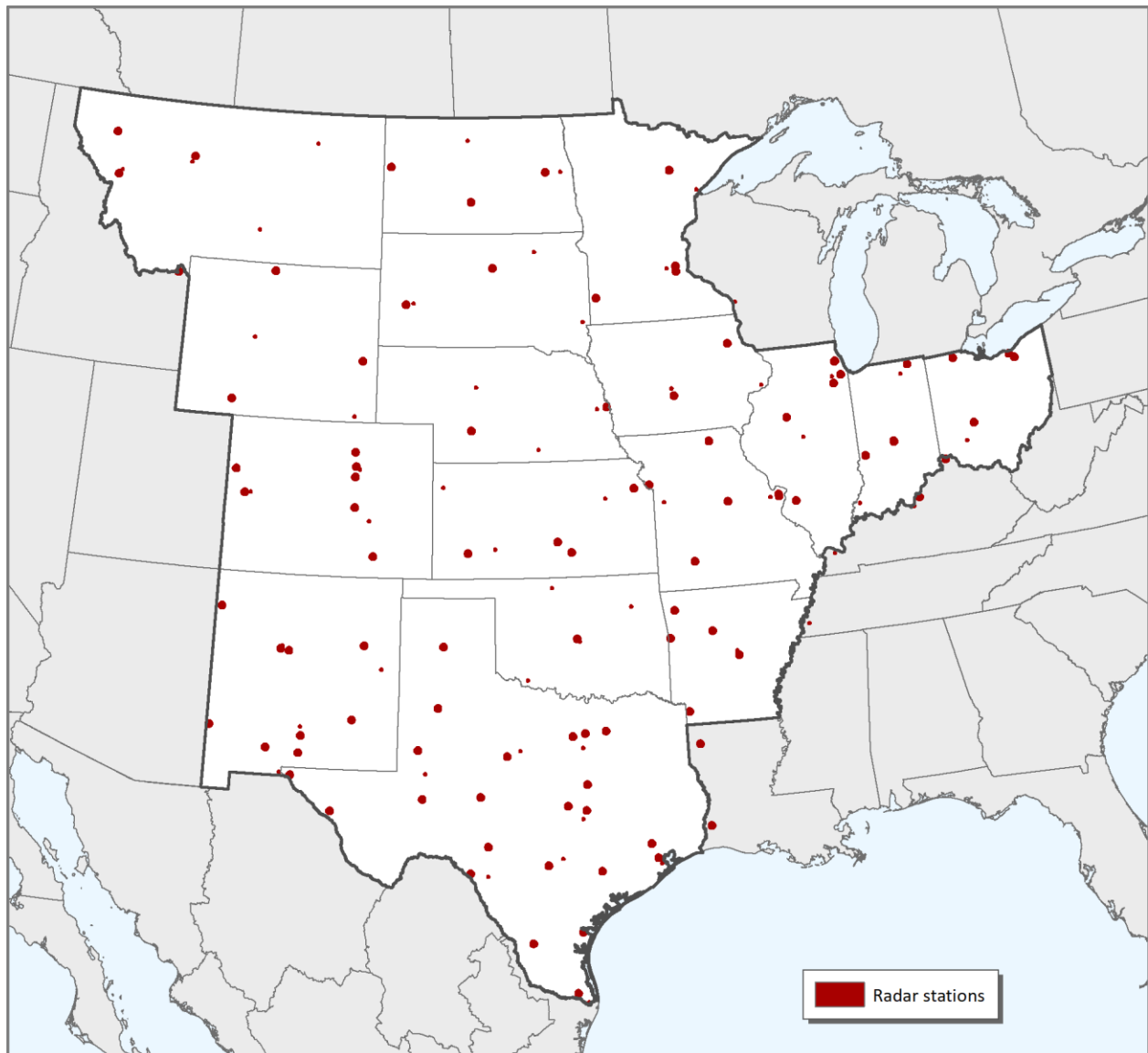
Sources: FAA (2017a, 2017b).



Radar stations

Wind turbines may cause interference with radar signals when sited in close proximity to weather stations and military installations (Vogt et al. 2011; NRDC and USDOD 2013). The National Oceanic and Atmospheric Administration requests that developers avoid constructing wind turbines within 3 km of NEXRAD radar installations (FAA 2018); a larger avoidance distance of 9.26 km is assumed for Department of Defense radar sites (Tegen et al. 2016). Outside of these areas, mitigation may be required for wind turbines that penetrate radar lines of sight, particularly for structures within 36 km (FAA 2018).

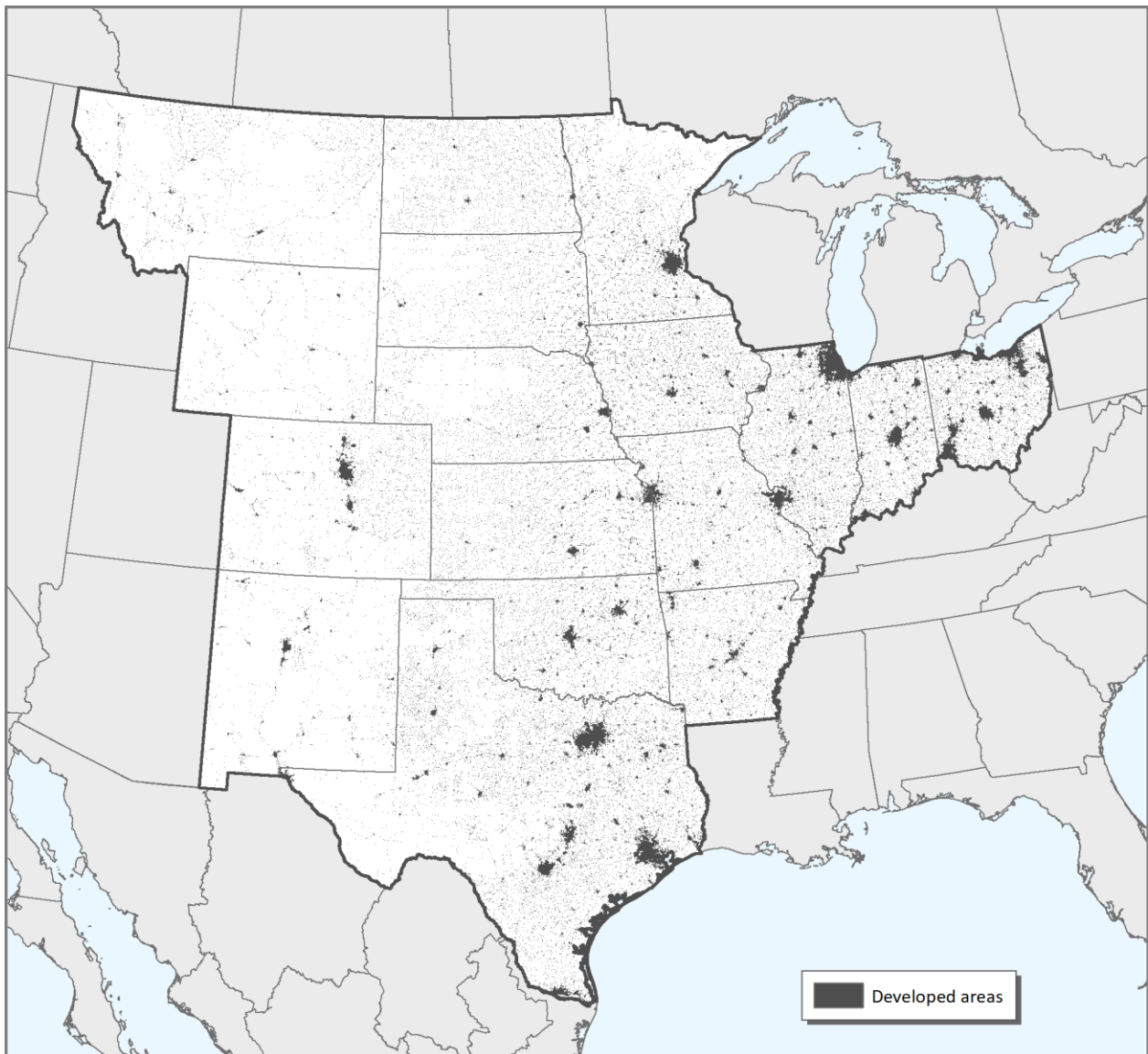
Sources: NOAA (2017); FAA (2018).



Developed areas

Urban lands and other developed areas (including roads, industrial sites, etc.) are considered unsuitable for commercial wind development (USDOE 2008).

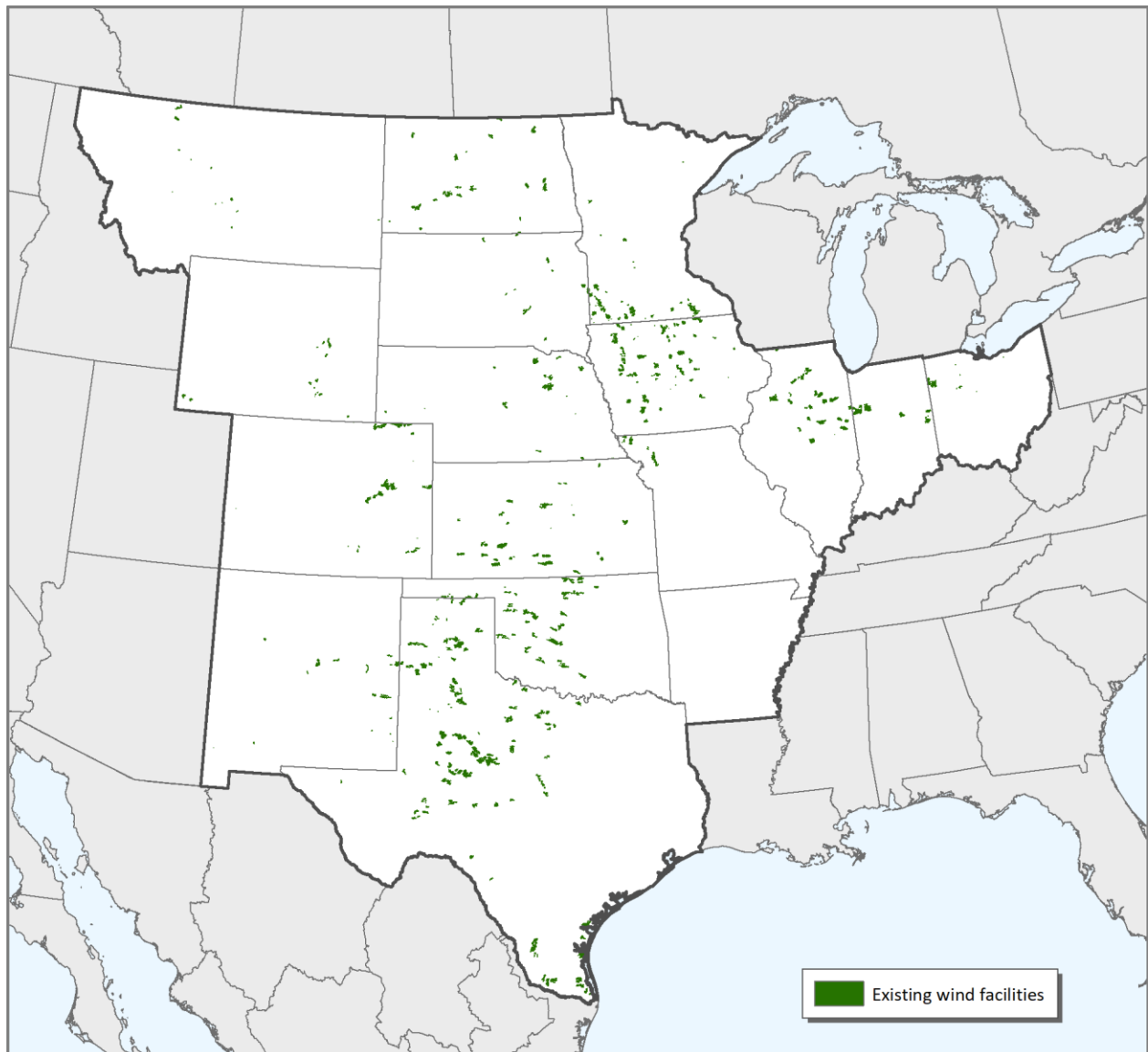
Sources: Fry et al. (2011); USCB (2016).



Existing wind facilities

Areas within 1.6 km of existing wind turbines are considered unsuitable for new wind development. This distance represents the typical spacing of turbine strings oriented perpendicularly to prevailing winds in the Great Plains.

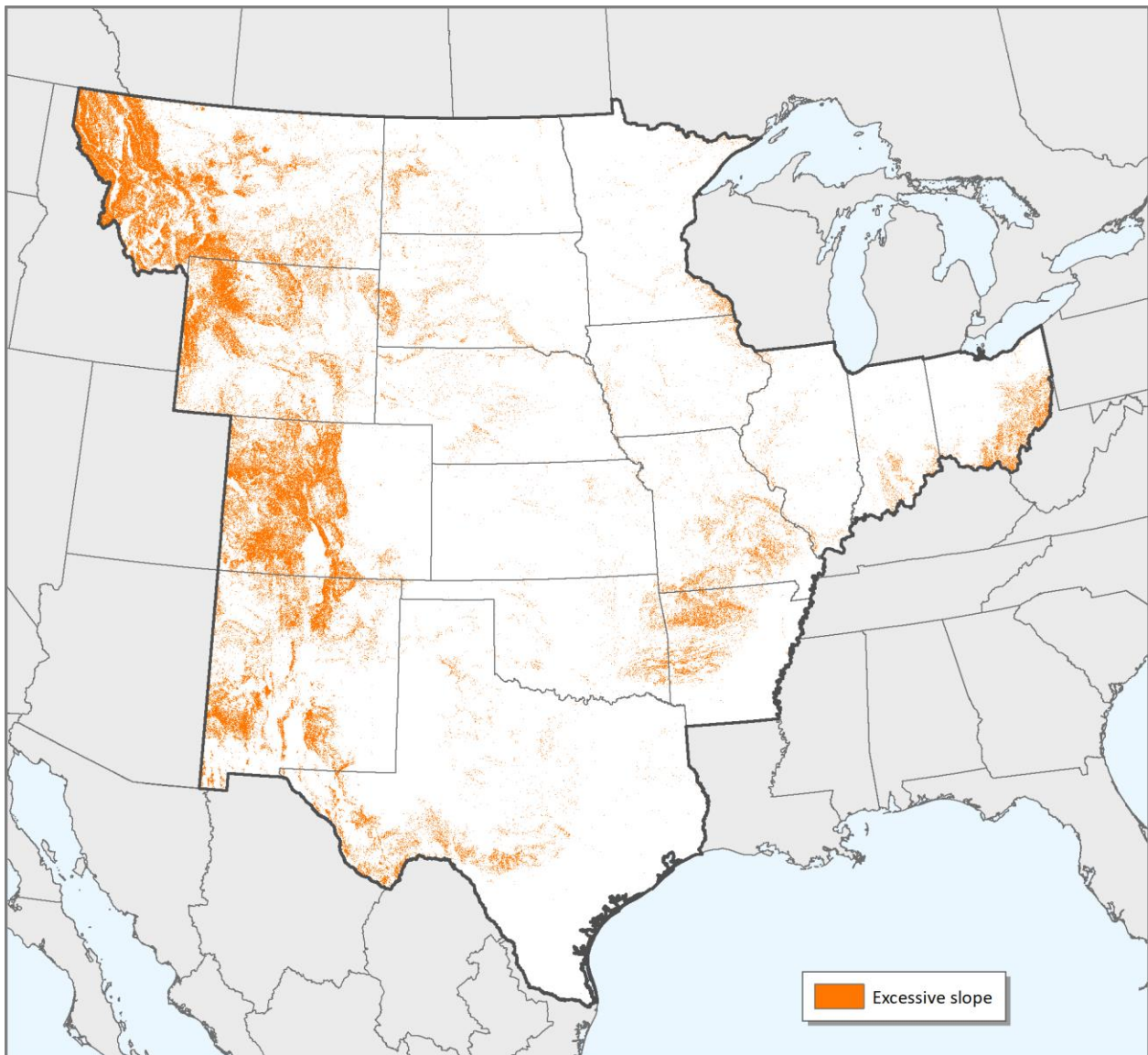
Source: FAA (2018).



Excessive slope

Steeply sloping terrain may significantly increase capital costs associated with turbine construction. Areas of slope exceeding 20% are considered unsuitable for wind development (USDOE 2008).

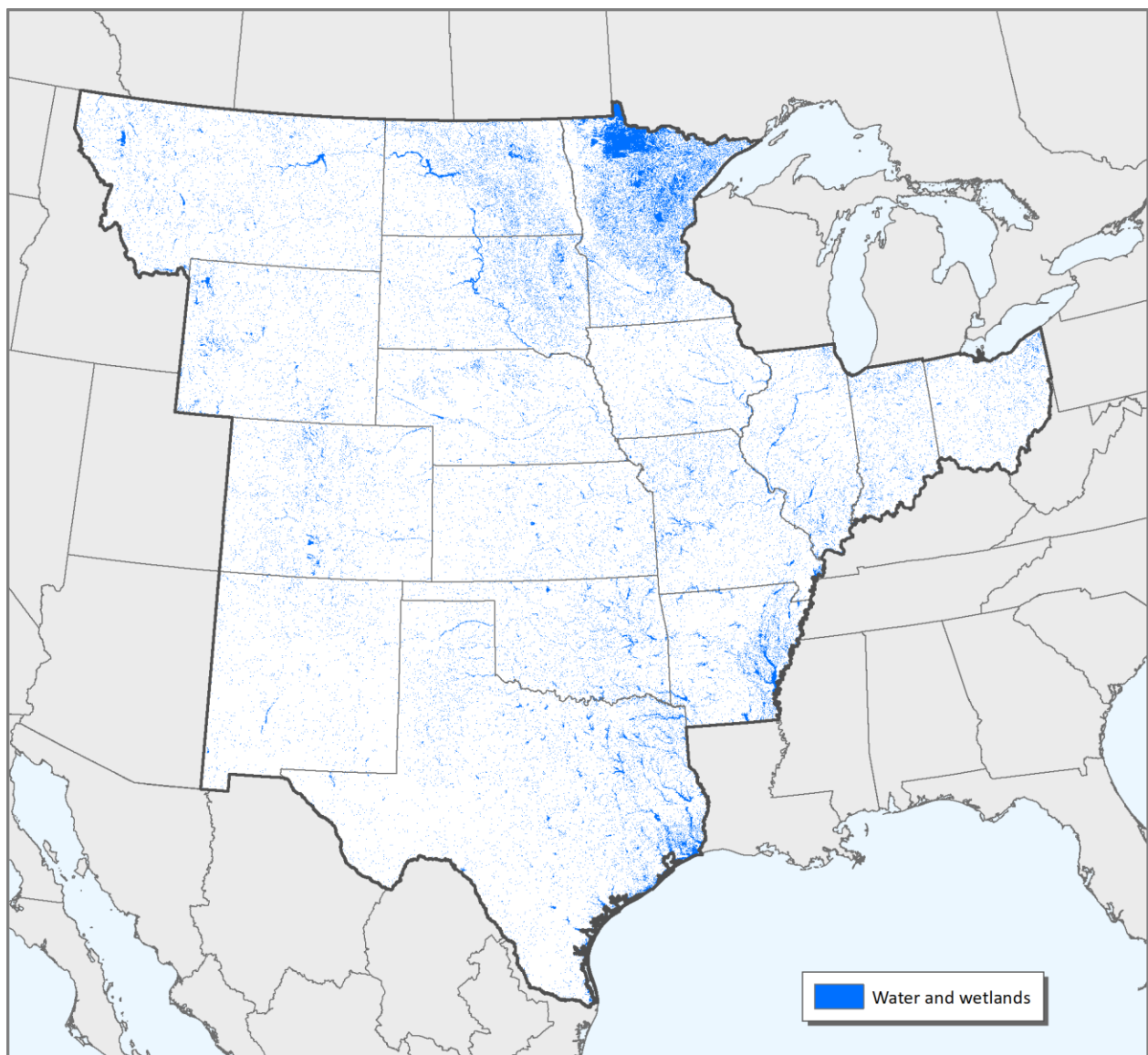
Source: USGS (2017a).



Water and wetlands

Open water and wetland areas are considered unsuitable for wind development (USDOE 2008).

Sources: Fry et al. (2011); PLJV (2015); USFWS (2016b).



Poor wind resource

Areas with annual average wind speeds of less than 6.5 m/s at 80 m height may be unsuitable for wind development (AWS Truepower 2010).

Source: AWS Truepower (2010).



Negative relative elevation

Mesoscale wind maps are often generalized and may not accurately depict wind energy potential at a given site (Bailey et al. 1997; Tennis et al. 1999). Wind developers employ a variety of computational models to assess local wind resources based on orography, measured wind speed, and other factors (Langreder 2010; Hau and von Renouard 2013). Most commercial wind facilities in the central U.S. are situated on topographic ridges which experience higher winds than the general surroundings. To identify terrain conducive to development, we calculated relative elevation based on the mean elevation of annuli extending 3, 6, 12, and 24 km from a given point (White et al. 2014). Negative values represent areas that lie below the adjacent landscape and thus have decreased wind exposure. Mountainous and coastal regions were not analyzed or excluded based on relative elevation as wind resources in these areas may be influenced by more complex topographic and meteorological factors.

Sources: methods – White et al. (2014); data – USGS (2017); analysis – TNC (2019).



Statutory restrictions

Wind development may be legally (or functionally) restricted in some areas of the central U.S., including within 2.8 km buffers of airport runways, public schools, and hospitals in Oklahoma (17 O.S., Section 160. 20, as amended); the "Heart of the Flint Hills" region in Kansas (Rothschild 2005; KBS 2015c); 1.6 km and 800 m buffers of certain state-protected properties in Illinois, as supported by the Illinois Natural Areas Preservation Act (525 ILCS 30/1-26); and 150 m buffers of state trails in Minnesota (cf. MNDNR 2018b).

Many additional state, county, and local regulations pertaining to wind development may exist across the region; however, a detailed examination of these constraints was beyond the scope of this assessment.

Sources: KBS (2015c); OKSDE (2015); PSCC (2015); MNDNR (2016); USDOT (2017); USGS (2017b).



Literature Cited

- American Bird Conservancy (ABC). 2015. Wind risk assessment maps for Kansas and Oklahoma. <http://abcbirds.org/program/wind-energy/wind-risk-assessment-map/>, accessed March 13, 2015.
- American Wind Energy Association (AWEA). 2012. Letter to Ken Salazar, U.S. Department of the Interior Secretary regarding the U.S. Fish and Wildlife Service voluntary wind energy guidelines. https://www.eenews.net/assets/2012/05/16/document_pm_03.pdf, accessed May 23, 2019.
- American Wind Energy Association (AWEA). 2019(a). U.S. wind industry fourth quarter 2018 market report. AWEA, Washington, DC.
- American Wind Energy Association (AWEA). 2019(b). U.S. wind industry annual market report: year ending 2018. AWEA, Washington, DC.
- American Wind Wildlife Institute (AWWI). 2018. A summary of bat fatality data in a nationwide database. <http://www.awwi.org>, accessed July 25, 2018.
- Arnett, E.B. and E.F. Baerwald. 2013. Impacts of wind energy development on bats: implications for conservation. *In* Bat evolution, ecology, and conservation. Springer Science & Business Media, New York. Pp. 435-456.
- Argonne National Laboratory (ANL). 2016. West-wide wind mapping project: BLM-administered lands excluded from wind energy development. Vector digital data. <http://wwmp.anl.gov/>, accessed December 6, 2018.
- Arkansas Oil & Gas Commission (AOGC). 2014. Arkansas oil and gas wells. Vector digital data. <https://gis.arkansas.gov/>, accessed October 25, 2018.
- Arnett, E.B., G.D. Johnson, W.P. Erickson, and C.D. Hein. 2013. A synthesis of operational mitigation studies to reduce bat fatalities at wind energy facilities in North America. A report submitted to the National Renewable Energy Laboratory. <http://www.batsandwind.org>, accessed June 22, 2016.
- Arnett, E.B., E.F. Baerwald, F. Mathews, L. Rodrigues, A. Rodríguez-Durán, Jens Rydell, R. Villegas-Patraca, and C.C. Voight. 2016. Impacts of wind energy development on bats: a global perspective. *In* Bats in the anthropocene: conservation of bats in a changing world. Springer International Publishing, Cham, Switzerland. Pp. 295-323.
- Austin, J.E. and A.L. Richert. 2001. A comprehensive review of observational and site evaluation data of migrant whooping cranes in the United States, 1943–99. U.S. Geological Survey, Northern Prairie Wildlife Research Center, Jamestown, North Dakota.
- AWS Truepower. 2010. Utility-scale land-based 80 m wind maps for the United States. http://apps2.eere.energy.gov/wind/windexchange/wind_maps.asp, accessed December 14, 2013.
- Bailey, B.H., S.L. McDonald, D.W. Bernadett, M.J. Markus, and K.V. Elsohlz. 1997. Wind resource assessment handbook: fundamentals for conducting a successful monitoring program. Report prepared for the National Renewable Energy Laboratory. AWS Scientific, Inc., Albany, New York. <http://www.nrel.gov/wind/pdfs/22223.pdf>, accessed March 13, 2015.
- Bedrosian, G., J.D. Carlisle, Z.P. Wallace, B. Bedrosian, D.W. LaPlante, B. Woodbridge, and J.R. Dunk. 2018. Spatially explicit landscape-scale risk assessments for golden eagles in the western United States. Unpublished report prepared by the Western Golden Eagle Team, U.S. Fish and Wildlife Service, Regions 1, 2, 6, and 8.

- Belaire, J.A., B.J. Kreakie, T. Keitt, and E. Minor. 2014. Predicting and mapping potential whooping crane stopover habitat to guide site selection for wind energy projects. *Conservation Biology* 28(2): 541-550.
- Best, T.L., and K.N. Geluso. 2003. Summer foraging range of Mexican free-tailed bats (*Tadarida brasiliensis mexicana*) from Carlsbad Cavern, New Mexico. *The Southwestern Naturalist* 48(4): 590-596.
- Bureau of Land Management (BLM). 2018. BLM GRSG western U.S. biologically significant units map service. <https://landscape.blm.gov>, accessed July 3, 2018.
- Caire, W., J.D. Tyler, B.P. Blass, and M.A. Mares. 1989. *Mammals of Oklahoma*. University of Oklahoma Press, Norman. Pp. 147-150.
- Caire, W., R.S. Matlack, and K.B. Ganow. 2013. Population size estimations of Mexican free-tailed bat, *Tadarida brasiliensis*, at important maternity roosts in Oklahoma. Final performance report, federal aid grant F10AF00236 (T-55-R-1). Oklahoma Department of Wildlife Conservation.
- Cole, J. 2018. Notes from a March 7, 2018 meeting with U.S. Fish and Wildlife Service staff (Karen Herrington, Shauna Marquardt, and Jane Ledwin) at the Ecological Services Field Office in Columbia, Missouri. The Nature Conservancy, St. Louis.
- Colorado Natural Heritage Program (CNHP). 2017(a). Level 3 element occurrence records. Vector digital data. CNHP, Colorado State University, Fort Collins.
- Colorado Natural Heritage Program (CNHP). 2017(b). Level 3 potential conservation areas. Vector digital data. CNHP, Colorado State University, Fort Collins.
- Colorado Oil & Gas Conservation Commission (COGCC). 2018. Well surface locations. Vector digital data. COGCC, Department of Natural Resources. <https://cogcc.state.co.us>, accessed October 25, 2018.
- Colorado Parks and Wildlife (CPW). 2009. SPICE habitat model for black-tailed prairie dog. Vector digital data. CPW, Fort Collins.
- Colorado Parks and Wildlife (CPW). 2011(a). Gunnison sage-grouse production areas, brood areas, winter range, and severe winter range. Vector digital data. CPW, Fort Collins.
- Colorado Parks and Wildlife (CPW). 2011(b). Preble's meadow jumping mouse occupied range. Vector digital data. CPW, Fort Collins.
- Colorado Parks and Wildlife (CPW). 2013. Cooperative raptor database. Vector digital data. CPW, Fort Collins.
- Colorado Parks and Wildlife (CPW). 2015(a). Peregrine falcon nesting areas. Vector digital data. CPW, Fort Collins.
- Colorado Parks and Wildlife (CPW). 2015(b). Columbian sharp-tailed grouse production areas and winter range. Vector digital data. CPW, Fort Collins.
- Colorado Parks and Wildlife (CPW). 2015(c). Greater prairie chicken production areas. Vector digital data. CPW, Fort Collins.
- Colorado Parks and Wildlife (CPW). 2015(d). Plains sharp-tailed grouse production areas. Vector digital data. CPW, Fort Collins.
- Colorado Parks and Wildlife (CPW). 2015(e). Least tern foraging and production areas. Vector digital data. CPW, Fort Collins.

- Colorado Parks and Wildlife (CPW). 2015(f). Piping plover foraging and production areas. Vector digital data. CPW, Fort Collins.
- Colorado Parks and Wildlife (CPW). 2015(g). Mule deer and pronghorn severe winter ranges. Vector digital data. CPW, Fort Collins.
- Denholm, P., M. Hand, M. Jackson, and S. Ong. 2009. Land-use requirements of modern wind power plants in the United States. Technical report NREL/TP-6A2-45834. National Renewable Energy Laboratory, Golden, Colorado.
- Diamond, D.D. 2007. Range-wide modeling of golden-cheeked warbler habitat (classes 2 and 3). Final report to Texas Parks and Wildlife Department, Austin. 27 pp.
https://tpwd.texas.gov/business/grants/wildlife/section-6/docs/birds/e72_final_report.pdf, accessed March 28, 2018.
- Erickson, W., G. Johnson, D. Young, D. Strickland, R. Good, M. Bourassa, K. Bay, and K. Sernka. 2002. Synthesis and comparison of baseline avian and bat use, raptor nesting and mortality information from proposed and existing wind developments. A final report submitted to the Bonneville Power Administration. WEST, Inc., Cheyenne, Wyoming.
- Ewert, D.N., J.B. Cole, and E. Gramm. 2011. Wind energy: Great Lakes regional guidelines. Unpublished report to The Nature Conservancy, Lansing, Michigan. <http://www.conservationgateway.org>, accessed May 17, 2018.
- Fargione, J., J.M. Kiesecker, M.J. Slaats, S. Olimb. 2012. Wind and wildlife in the Northern Great Plains: identifying low-impact areas for wind development. PLoS ONE 7(7): [e41468](https://doi.org/10.1371/journal.pone.0041468). <http://lowimpactwind.tnc.org>.
- Federal Aviation Administration (FAA). 2010. Airspace, special use airspace, and temporary flight restrictions. <https://www.faa.gov>, accessed December 9, 2015.
- Federal Aviation Administration (FAA). 2018. DoD preliminary screening tool. <https://oeaaa.faa.gov/>, accessed February 3, 2018.
- Federal Aviation Administration (FAA). 2017(a). U.S. special use airspace shapefile. Vector digital data. <http://ais-faa.opendata.arcgis.com>, accessed December 30, 2017.
- Federal Aviation Administration (FAA). 2017(b). Visual flight reference raster charts for Albuquerque, Billings, Brownsville, Cheyenne, Chicago, Cincinnati, Dallas-Ft. Worth, Denver, Detroit, El Paso, Great Falls, Green Bay, Houston, Kansas City, Memphis, Omaha, Salt Lake City, San Antonio, St. Louis, Twin Cities, and Wichita. https://www.faa.gov/air_traffic/flight_info/aeronav, accessed November 2, 2017.
- Federal Aviation Administration (FAA). 2018. Digital obstacle file. https://www.faa.gov/air_traffic/flight_info/aeronav/digital_products/dof/, accessed July 8, 2018.
- FracTracker Alliance. 2016. U.S. oil and gas activity (for Illinois, Indiana, and Ohio). Vector digital data. <https://www.fractracker.org/>, accessed October 25, 2018.
- Frick, W.F., E.F. Baerwald, J.F. Pollock, R.M.R. Barclay, J.A. Szymanski, T.J. Weller, A.L. Russell, S.C. Loeb, R.A. Medellin, and L.P. McGuire. 2017. Fatalities at wind turbines may threaten population viability of a migratory bat. *Biological Conservation* 209: 172-177.

- Fry, J., G. Xian, S. Jin, J. Dewitz, C. Homer, L. Yang, C. Barnes, N. Herold, and J. Wickham. 2011. Completion of the 2006 National land cover database for the conterminous United States. *Photogrammetric Engineering and Remote Sensing* 77(9):858-864.
- Graening, G.O., M.J. Harvey, W.L. Puckette, R.C. Stark, D.B. Sasse, S.L. Hensley, and R.K. Redman. 2011. Conservation status of the endangered Ozark big-eared bat (*Corynorhinus townsendii ingens*) – a 34-year assessment. *Publications of the Oklahoma Biological Survey* 11: 1-16.
- Grodsky, S.M., C.S. Jennelle, and D. Drake. 2013. Bird mortality at a wind energy facility near a wetland of international importance. *The Condor* 115(4): 700-711.
- Hau, E. and H. von Renouard. 2013. The wind resource. *In* Wind turbines: fundamentals, technologies, application, economics. Springer Science & Business Media, Berlin. Pp. 505-548.
- Hayes, M.A., L.A. Hooton, K.L. Gilland, C. Grandgent, R.L. Smith, S.R. Lindsay, J.D. Collins S.M. Schumacher, P.A. Rabie, J.C. Gruver, and J. Goodrich-Mahoney. 2019. A smart curtailment approach for reducing bat fatalities and curtailment time at wind energy facilities. *Ecological Applications*: [e01881](#).
- Hoekstra, J.M., T.M. Boucher, T.H. Ricketts, and C. Roberts. 2005. Confronting a biome crisis: global disparities of habitat loss and protection. *Ecology Letters* 8: 23-29.
- Hovick, T.J., R.D. Elmore, D.K. Dahlgren, S.D. Fuhlendorf, and D.M. Engle. 2014. Evidence of negative effects of anthropogenic structures on wildlife: a review of grouse survival and behavior. *Journal of Applied Ecology* 51: 1680-1689.
- Illinois Statutes. 2018. Illinois General Assembly, Compiled Statutes. 525 ILCS 30/1-26.
- Indiana Natural Heritage Inventory Data Center (INHDC). 2014. Indiana natural heritage database element occurrence records. Vector digital data. Indiana Natural Heritage Database. Indiana Department of Natural Resources, Indianapolis.
- Iowa Department of Natural Resources (IADNR). 2017. Bird conservation areas in Iowa. <https://geodata.iowa.gov>, accessed March 20, 2018.
- Iowa Department of Natural Resources (IADNR). 2018. Wind farm review layer. Vector digital data. IADNR, Des Moines.
- Kansas Biological Survey (KBS). 2015(a). Kansas natural resource planner occurrence records for bat caves. Vector digital data. <http://kars.ku.edu/maps/naturalresourceplanner/>, accessed February 20, 2015.
- Kansas Biological Survey (KBS). 2015(b). Kansas natural resource planner occurrence records for threatened and endangered species. Vector digital data. <http://kars.ku.edu/maps/naturalresourceplanner/>, accessed February 20, 2015.
- Kansas Biological Survey (KBS). 2015(c). Kansas natural resource planner Tallgrass Heartland shapefile. Vector digital data. <http://kars.ku.edu/maps/naturalresourceplanner/>, accessed February 20, 2015.
- Kansas Department of Wildlife, Parks, and Tourism (KDWPT). 2015. Threatened and endangered wildlife. <http://kdwpt.state.ks.us/Services/Threatened-and-Endangered-Wildlife>, accessed February 20, 2015.
- Kansas Geological Survey (KGS). 2018. Oil and gas wells shapefile. Vector digital data. University of Kansas, Geological Survey. <http://www.kgs.ku.edu/PRS/petroDB.html>, accessed October 25, 2018.

- Kansas State University (KSU). 2002. Habitat model for gray myotis (*Myotis grisescens*). http://www.k-state.edu/kansasgap/KS-GAPPhase1/finalreport/SpModels/Mammals/Gray_Myotis.pdf, accessed February 20, 2015.
- Kerlinger, P., R. Curry, L. Culp, A. Jain, C. Wilkerson, B. Fischer, and A. Hasch. 2006. Post-construction avian and bat fatality monitoring study for the High Winds Wind Power Project, Solano County, California: two year report. Curry and Kerlinger LLC, McLean, Virginia.
- Kiesecker, J.M., J.S. Evans, J. Fargione, K. Doherty, K.R. Foresman, T.H. Kunz, D. Naugle, N.P. Nibbelink, and N.D. Niemuth. 2012. Win-win for wind and wildlife: a vision to facilitate sustainable development. PLoS ONE 6(4): [e175666](https://doi.org/10.1371/journal.pone.0175666).
- Kunz, T.H. and M.B. Fenton (eds). 2003. Bat ecology. University of Chicago Press.
- Langreder, W. 2010. Wind resource and site assessment. In Tong, W. (ed.) Wind power generation and wind turbine design. WIT Press, Billerica, Massachusetts. Pp. 49-87.
- Laurencio, L.R., and L.A. Fitzgerald. 2010. Atlas of distribution and habitat of the dunes sagebrush lizard (*Sceloporus arenicolus*) in New Mexico. Texas Cooperative Wildlife Collection, Department of Wildlife and Fisheries Sciences, Texas A&M University, College Station. http://www.bison-m.org/documents/25024_LaurencioandFitzgerald2010.pdf, accessed March 15, 2018.
- LeBeau, C.W., J.L. Beck, G.D. Johnson, R.M. Nielson, M.J. Holloran, K.G. Gerow, and T.L. McDonald. 2017. Greater sage-grouse male lek counts relative to a wind energy development. Wildlife Society Bulletin 41(1): 17-26.
- Masters, R.E., J.E. Skeen, and J.A. Garner. 1989. Red-cockaded woodpecker in Oklahoma: an update of Wood's 1974-77 study. Proceedings of the Oklahoma Academy of Science 69: 27-31.
- Miller, A. 2008. Patterns of avian and bat mortality at a utility-scaled wind farm on the southern High Plains. Master's thesis, Texas Tech University, Lubbock.
- Minnesota Department of Natural Resources (MNDNR). 2015. MBS sites of biodiversity significance. <https://gisdata.mn.gov>, accessed March 24, 2015.
- Minnesota Department of Natural Resources (MNDNR). 2016. Minnesota trails: division of parks & trails. Vector digital data. <https://gisdata.mn.gov>, accessed August 28, 2016.
- Minnesota Department of Natural Resources (MNDNR). 2018(a). Wild, scenic & recreational rivers. Vector digital data. <https://gisdata.mn.gov>, accessed February 19, 2018.
- Minnesota Department of Natural Resources (MNDNR). 2018(b). Guidance for Commercial Wind Energy Projects. <https://www.dnr.state.mn.us>, accessed April 13, 2018.
- Minnesota Department of Natural Resources and U.S. Fish and Wildlife Service (MNDNR & USFWS). 2018. Townships containing documented northern long-eared bat maternity roost trees and/or hibernacula entrances in Minnesota. <https://files.dnr.state.mn.us>, accessed April 11, 2018.
- Minnesota Prairie Plan Working Group (MNPPWG). 2017. Minnesota prairie conservation plan core areas, corridors, matrix habitat complexes, and strategic habitat complexes. Vector digital data. Minnesota Department of Natural Resources, St. Paul.
- Missouri Department of Conservation (MDOC). 2015. Missouri state wildlife action plan. <https://mdc.mo.gov/>, accessed March 16, 2018.

Missouri Geological Survey (MGS). 2018. Oil and gas wells tabular data. Missouri Department of Natural Resources, Geological Survey. <https://dnr.mo.gov/geology/geosrv/oilandgas.htm>, accessed October 25, 2018.

Montana Department of Natural Resources & Conservation (MTDNRC). 2018. Oil and gas wells shapefile. Vector digital data. MTDNRC, Board of Oil & Gas Conservation. <http://dnrc.mt.gov>, accessed October 25, 2018.

Montana Fish, Wildlife, and Parks (MTFWP). 2010. Big game winter range habitat. Vector digital data. <http://fwp.mt.gov/fishAndWildlife/conservationInAction/crucialAreas.html>, accessed July 2, 2018.

Montana Fish, Wildlife, and Parks (MTFWP). 2016. Sage-grouse core areas. Vector digital data. <http://gis-mtfwp.opendata.arcgis.com>, accessed April 10, 2018.

Montana Natural Heritage Program (MTNHP). 2016. Wetlands of special significance. Vector digital data. MTNHP, Helena.

Montana Natural Heritage Program (MTNHP). 2018(a). Species occurrence data for raptors. Vector digital data. MTNHP, Helena.

Montana Natural Heritage Program (MTNHP). 2018(b). Species occurrence data for white-tailed prairie dog and black-tailed prairie dog. Vector digital data. MTNHP, Helena.

Montana Natural Heritage Program (MTNHP). 2018(c). Species occurrence data for bats. Vector digital data. MTNHP, Helena.

Montana Natural Heritage Program (MTNHP). 2018(d). Occurrence data for terrestrial threatened and endangered species. Vector digital data. MTNHP, Helena.

Montana Natural Heritage Program (MTNHP). 2018(e). Species occurrence data for trumpeter swan. Vector digital data. MTNHP, Helena.

National Audubon Society (NAS). 2018. Important bird areas. <https://www.audubon.org/important-bird-areas>, accessed July 7, 2018.

National Oceanic and Atmospheric Administration. 2017. Climate data online radar mapping tool. <https://gis.ncdc.noaa.gov/map/viewer/#app=cdo>, accessed December 31, 2017.

Natural Resources Defense Council and U.S. Department of Defense (NRDC and USDOD). 2013. Working with the Department of Defense: siting renewable energy development. http://docs.nrdc.org/nuclear/files/nuc_13112001a.pdf, accessed December 9, 2015.

Nebraska Oil and Gas Conservation Commission (NOGCC). 2018. Wells GIS shapefile. Vector digital data. <http://www.nogcc.ne.gov/NOGCCPublications.aspx>, accessed October 25, 2018.

Nebraska Wind and Wildlife Working Group (NWWWG). 2016. Guidelines for avoiding, minimizing, and mitigating impacts of wind energy on biodiversity in Nebraska. Nebraska Game and Parks Commission, Lincoln. <https://wind-energy-wildlife.unl.edu/>, accessed March 15, 2018.

New Mexico Energy, Minerals and Natural Resources Department (NMEMNRD). 2018. Oil and gas shapefile. Vector digital data. <http://www.emnrd.state.nm.us/OCD/ocdgis.html>, accessed October 25, 2018.

- Niemuth N.D., R.E. Reynolds, D.A. Granfors, R.R. Johnson, B. Wangler, and M. Estey. 2008. Landscape-level planning for conservation of wetland birds in the U.S. Prairie Pothole Region. *In* Millsaugh, J.J., F.R. Thompson, eds. *Models for planning wildlife conservation in large landscapes*. Elsevier Science. Pp. 533-560.
- North Dakota Department of Mineral Resources (NDDMR). 2018. Wells shapefile. Vector digital data. NDDMR Industrial Commission, Oil and Gas Division. <https://www.dmr.nd.gov/oilgas/>, accessed October 25, 2018.
- Obermeyer, B., R. Manes, J. Kiesecker, J. Fargione, and K. Sochi. 2011. Development by design: mitigating wind development's impacts on wildlife in Kansas. *PLoS One* 6(10): [e26698](https://doi.org/10.1371/journal.pone.0026698).
- Oklahoma Department of Wildlife Conservation (ODWC). 2015. Oklahoma's threatened and endangered species. <http://www.wildlifedepartment.com/wildlifemgmt/endangeredspecies.htm>, accessed February 20, 2015.
- Oklahoma State Department of Education (OKSDE). 2015. Oklahoma Public Schools 2014-2015 shapefile. Vector digital data. <http://okmaps.org>, accessed December 9, 2015.
- Oklahoma Statutes. 2017. Oklahoma Legislature, Constitution and Statutes. Title 17, § 160.20.
- Ostlie, W. 2003. *Untilled landscapes of the Great Plains*. The Nature Conservancy, Minneapolis, Minnesota.
- Oteri, F., R. Baranowski, I. Baring-Gould, and S. Tegen. 2018. 2017 state of wind development in the United States by region. Technical report NREL/TP-5000-70738. National Renewable Energy Laboratory, Golden, Colorado.
- Pagel, J.E., K.J. Kritz, B.A. Milsap, R.K. Murphy, E.L. Kershner, and S. Covington. 2013. Bald eagle and golden eagle mortalities at wind energy facilities in the contiguous United States. *Journal of Raptor Research* 47(3): 311-315.
- Pearse, A.T., D.A. Brandt, W.C. Harrell, K.L. Metzger, D.M. Baasch, and T.J. Hefley. 2015. Whooping crane stopover site use intensity within the Great Plains. U.S. Geological Survey Open-File Report 2015-1166. <http://dx.doi.org/10.3133/ofr20151166>, accessed August 3, 2017.
- Piorkowski, M.D and T.J. O'Connell. 2010. Spatial pattern of summer bat mortality from collisions with wind turbines in mixed-grass prairie. *The American Midland Naturalist* 164(2): 260-269.
- Playa Lakes Joint Venture (PLJV). 2015. Playa decision support system. <http://pljv.org/playa-dss>, accessed August 3, 2017 and July 3, 2018.
- Playa Lakes Joint Venture (PLJV). 2017. Energy development siting recommendations for playas. http://pljv.org/documents/PLJV_Energy_Development_Siting_Recommendations_Playas.pdf, accessed August 3, 2017.
- Prairie State Conservation Coalition (PSCC). 2015. Illinois protected natural lands (Illinois Nature Preserves Commission, Illinois Natural Areas Inventory, and Illinois Department of Natural Resources properties). Vector digital data. PSCC, Springfield.
- Pruett, C.L., M.A. Patten, and D.H. Wolfe. 2009. Avoidance behavior of prairie grouse: implications for wind and energy development. *Conservation Biology* 23: 1253-1259.
- R.E. Reynolds, T.L. Shaffer, C.R. Loesch, and R.C Cox Jr. 2006. The Farm Bill and duck production in the Prairie Pothole region: increasing the benefits. *Wildlife Society Bulletin* 34: 963-974.

- Rothschild, S. 2005, January 15. Flint Hills may not get wind of power plan. Lawrence Journal World, pp. 1B, 3B.
- Sawyer, H., R.M. Nielson, F. Lindzey, and L.L. McDonald. 2006. Winter habitat selection of mule deer before and during development of a natural gas field. *Journal of Wildlife Management*, 70(2): 396-403.
- Sawyer, H., M.J. Kaufmann, and R.M. Nielson. 2009. Influence of well pad activity on winter habitat selection patterns of mule deer. *Journal of Wildlife Management* 73(7): 1052-1061.
- Schmidly, D.J. 2004. The mammals of Texas (revised edition). University of Texas Press, Austin. Pp. 123-129.
- South Dakota Department of Environment and Natural Resources (SDDENR). 2018. Records of oil and gas drilling. Vector digital data. SDDENR, Geological Survey. http://www.sdgs.usd.edu/SDOIL/oilgas_databases.aspx, accessed October 25, 2018.
- Southern Great Plains Crucial Habitat Assessment Tool (SGPCHAT). 2018. <http://www.kars.ku.edu/maps/sgpchat/>, accessed April 11, 2018.
- Smallwood, K.S., and C. Thelander. 2008. Bird Mortality in the Altamont Pass wind resource area, California. *Journal of Wildlife Management* 72(1): 215-223.
- Stewart, G.B., A.S. Pullin, and C.F. Coles. 2007. Poor evidence-base for assessment of windfarm impacts on birds. *Environmental Conservation* 34(1): 1-11.
- Taylor, K.L., J.L. Beck, and S.V. Huzurbazar. 2016. Factors influencing winter mortality risk for pronghorn exposed to wind energy development. *Rangeland Ecology & Management* 69: 108–116.
- Tegen, S., E. Lantz, T. Mai, D. Heimiller, M. Hand, and E. Ibanez. 2016. An initial evaluation of siting considerations on current and future wind deployment. Technical report NREL/TP-5000-61750. National Renewable Energy Laboratory, Golden, Colorado.
- Tennis, M.W., S. Clemmer, and J. Howland. 1999. Assessing wind resources: a guide for landowners, project developers, and power suppliers. Union of Concerned Scientists briefing paper. http://www.ucsusa.org/sites/default/files/legacy/assets/documents/clean_energy/wind_resource_assessment.pdf, accessed March 13, 2015.
- Texas Natural Diversity Database (TXNDD). 2018(a). Prairie dog town element occurrence data export. Vector digital data. Wildlife diversity program of the Texas Parks & Wildlife Department, Austin.
- Texas Natural Diversity Database (TXNDD). 2018(b). Attwater's prairie-chicken element occurrence data export. Vector digital data. Wildlife diversity program of the Texas Parks & Wildlife Department, Austin.
- Texas Natural Diversity Database (TXNDD). 2018(c). American burying beetle, aplomado falcon, dunes sagebrush lizard, least tern, ocelot, and red-cockaded woodpecker element occurrence data exports. Vector digital data. Wildlife diversity program of the Texas Parks & Wildlife Department, Austin.
- Texas Railroad Commission (TXRRC). 2018. Oil and gas wells. Vector digital data. TXRRC, Austin.
- Texas Speleological Survey (TSS). 2018. Known bat caves in Texas (generalized to USGS quadrangle). Vector digital data. TSS, Austin.
- The Conservation Fund (TCF). 2014. Midwest wind energy MSHCP green infrastructure network. Raster digital data. <http://tcfmidwestwind.conservationgis.com>, accessed June 3, 2018.

- The Nature Conservancy (TNC). 2000. Ecoregional conservation in the Osage Plains/Flint Hills Prairie. TNC, Midwestern Resource Office, Minneapolis, Minnesota.
- The Nature Conservancy (TNC). 2002. Gulf Coast Prairies and Marshes ecoregional conservation plan. TNC, San Antonio, Texas.
- The Nature Conservancy (TNC). 2003. Ozarks ecoregional conservation assessment. TNC, Midwestern Resource Office, Minneapolis, Minnesota.
- The Nature Conservancy (TNC). 2007. Greater Flint Hills project workplan. TNC, Austin, Texas.
- The Nature Conservancy (TNC). 2009. Conservation action plan for the Refugio-Goliad Prairie Conservation Area. TNC, Austin, Texas.
- The Nature Conservancy (TNC). 2019. Oklahoma Chapter geographic information system database. TNC, Tulsa, Oklahoma.
- The Nature Conservancy and the National Audubon Society (TNC and Audubon). 2010. Wind power development sensitive areas in Indiana. Vector digital data. TNC, Indianapolis, Indiana.
- Theobald, D.M. 2013. A general model to quantify ecological integrity for landscape assessments and U.S. application. *Landscape Ecology* 28(10): 1859-1874.
- Trainor, A.M., R.J. McDonald, and J. Fargione. 2016. Energy sprawl is the largest driver of land use change in United States. *PLoS ONE* 11(9): [e0162269](https://doi.org/10.1371/journal.pone.0162269).
- U.S. Census Bureau (USCB). 2016. Urban areas national shapefile (2010 census). Vector digital data. <https://www.census.gov>, accessed December 31, 2017.
- U.S. Department of Energy (USDOE). 2008. 20% wind energy by 2030: increasing wind energy's contribution to U.S. electricity supply. <http://www.nrel.gov/docs/fy08osti/41869.pdf>, accessed August 22, 2010.
- U.S. Department of Energy (USDOE). 2017. 2017 wind technologies market report. USDOE, Lawrence Berkeley National Laboratory. <http://eta-publications.lbl.gov>, accessed May 23, 2019.
- U.S. Department of Energy (USDOE). 2018. Electric power monthly data for August 2018. USDOE, Energy Information Administration. <http://www.eia.gov>, accessed October 27, 2018.
- U.S. Department of Transportation (USDOT). 2017. National transportation atlas database airport runways. Vector digital data. <http://osav-usdot.opendata.arcgis.com>, accessed December 29, 2017.
- U.S. Fish and Wildlife Service (USFWS). 1989. Southeastern states bald eagle recovery plan. <http://ecos.fws.gov>, accessed March 13, 2015.
- U.S. Fish and Wildlife Service (USFWS). 1990. Recovery plan for the interior population of the least tern (*Sterna antillarum*). Essential habitat polygons in Oklahoma and Kansas. <http://ecos.fws.gov>, accessed December 12, 2010.
- U.S. Fish and Wildlife Service (USFWS). 2003. Interim guidelines to avoid and minimize wildlife impacts from wind turbines. <http://www.fws.gov/habitatconservation/wind.pdf>, accessed August 22, 2007.
- U.S. Fish and Wildlife Service (USFWS). 2009(a). Whooping cranes and wind development – an issue paper. <http://www.fws.gov/southwest/es/library>, accessed December 10, 2010.

- U.S. Fish and Wildlife Service (USFWS). 2009(b). ESA basics fact sheet. <http://www.fws.gov/endangered/>, accessed December 10, 2010.
- U.S. Fish and Wildlife Service (USFWS). 2010. Cooperative whooping crane tracking project GIS database. USFWS, Grand Island, Nebraska.
- U.S. Fish and Wildlife Service (USFWS). 2011. Species profile for whooping crane (*Grus americana*). <http://ecos.fws.gov>, accessed March 13, 2015.
- U.S. Fish and Wildlife Service (USFWS). 2012(a). Land-based wind energy guidelines. <https://www.fws.gov/midwest/wind/resources/>, accessed November 15, 2018.
- U.S. Fish and Wildlife Service (USFWS). 2012(b). Draft land protection plan: Austin's Woods. <https://www.fws.gov/southwest/>, accessed March 28, 2018.
- U.S. Fish and Wildlife Service (USFWS). 2014(a). American burying beetle conservation priority areas shapefile and metadata. <http://www.fws.gov/southwest/es/oklahoma/>, accessed February 20, 2015.
- U.S. Fish and Wildlife Service (USFWS). 2016(a). Midwest wind energy multi-species habitat conservation plan (public review draft). <http://www.midwestwindhcp.com/>, accessed April 22, 2016.
- U.S. Fish and Wildlife Service (USFWS). 2016(b). National wetlands inventory, version 2. <http://www.fws.gov/wetlands/>, accessed December 26, 2017.
- U.S. Fish and Wildlife Service (USFWS). 2018. Threatened & endangered species critical habitat polygons shapefile. <https://ecos.fws.gov>, accessed June 22, 2018.
- U.S. Geological Survey (USGS). 2016. Protected areas database of the United States (PAD-US), version 1.4. Vector digital data. USGS Gap Analysis Program. <https://www.usgs.gov/core-science-systems/science-analytics-and-synthesis/gap>, accessed May 16, 2018.
- U.S. Geological Survey (USGS). 2017(a). National elevation dataset. Raster digital data. <http://ned.usgs.gov/>, accessed December 19, 2017.
- U.S. Geological Survey (USGS). 2017(b). 2017 geographic names information system text file for Oklahoma. <http://viewer.nationalmap.gov>, accessed June 23, 2017.
- Van Pelt, W.E., S. Kyle, J. Pitman, D. Klute, G. Beauprez, D. Schoeling, A. Janus, and J. Haufler. 2013. The lesser prairie-chicken range-wide conservation plan. Western Association of Fish and Wildlife Agencies, Cheyenne, Wyoming.
- Vodehnal, W.L., and J.B. Haufler. 2007. A grassland conservation plan for prairie grouse. North American Grouse Partnership. Fruita, Colorado.
- Vogt, R.J., E.J. Ciardi, and R.G. Guenther. 2011. New criteria for evaluating wind turbine impacts on NEXRAD weather radars. NEXRAD Radar Operations Center, Norman, Oklahoma. http://www.roc.noaa.gov/wsr88d/Publicdocs/WINDPOWER2011_Final.pdf, accessed December 9, 2015.
- Vore, J. 2012. Big game winter range recommendations for subdivision development in Montana: justification and rationale. Montana Fish, Wildlife & Parks Professional Paper. <http://fwp.mt.gov/>, accessed July 2, 2018.

- Watson, R.T., P.S. Kolar, M. Ferrer, T. Nygård, N. Johnston, W.G. Hunt, H.A. Smit-Robinson, C.J. Farmer, M. Huso, and T.E. Katzner. 2018. Raptor interactions with wind energy: case studies from around the world. *The Journal of Raptor Research* 52(1): 1-18.
- Western Hemisphere Shorebird Reserve Network (WHSRN). 2019. WHSRN sites. <http://www.whsrn.org>, accessed May 10, 2019.
- White, T., J. Kuba, and J. Thomas. 2014. Data driven generation siting for renewables integration in transmission planning. Proceedings of the ESRI User Conference, July 14-18, 2014, San Diego, California.
- Wilcove, D.S., D. Rothstein, J. Dubow, A. Phillips, and E. Losos. 1998. Quantifying threats to imperiled species in the United States. *Bioscience* 48: 607–615.
- Winder, V.L., A.J. Gregory, L.B. McNew, and B.K. Sandercock. 2015. Responses of male greater prairie-chickens to wind energy development. *The Condor* 117: 284-296.
- Weller, T.J., K.T. Castle, F. Liechti, C.D. Hein, M.R. Schirmacher, and P.M. Cryan. 2016. First direct evidence of long-distance seasonal movements and hibernation in a migratory bat. *Scientific Reports* 6: [34585](https://doi.org/10.1038/s41598-016-04585-4).
- Western Electricity Coordinating Council (WECC). 2018. WECC environmental data viewer. <http://www.wecc.org>, accessed July 2, 2018.
- Wyoming Game and Fish Department (WGFD). 2004. Occupied peregrine falcon habitat. Vector digital data. WGFD, Cheyenne.
- Wyoming Game and Fish Department (WGFD). 2006. While-tailed prairie dog towns. Vector digital data. WGFD, Cheyenne.
- Wyoming Game and Fish Department (WGFD). 2010. Recommendations for development of oil and gas resources within important wildlife habitats. <https://www.nrc.gov/docs/ML1108/ML110810642.pdf>, accessed October 14, 2018.
- Wyoming Game and Fish Department (WGFD). 2011. Mule deer and pronghorn crucial winter ranges. Vector digital data. WGFD, Cheyenne.
- Wyoming Game and Fish Department (WGFD). 2015. Sage grouse core and connectivity areas, version 4. Vector digital data. <https://wgfd.wyo.gov/>, accessed April 10, 2018.
- Wyoming Game and Fish Department (WGFD). 2016. Columbian sharp-tailed grouse leks. Vector digital data. WGFD, Cheyenne.
- Wyoming Game and Fish Department (WGFD). 2017(a). Greater sage-grouse leks (occupied). Vector digital data. WGFD, Cheyenne.
- Wyoming Game and Fish Department (WGFD). 2017(b). Plains sharp-tailed grouse leks. Vector digital data. WGFD, Cheyenne.
- Wyoming Oil and Gas Conservation Commission (WOGCC). 2018. All wells tabular data. <http://pipeline.wyo.gov/>, accessed October 25, 2018.